

# Our Kids Make a Difference

## 2019/2020 NEW BAR/BAT MITZVAH ENDOWMENT FUNDHOLDERS

The Jewish Foundation of Manitoba is premised on the theme of building for the future. Recognizing that the next generation is the future, the Foundation introduced Bar/Bat Mitzvah endowment funds - an opportunity for young people to gain experience with endowment giving, and to begin to plant for the future.

Bar/Bat Mitzvah endowment funds teach children about the importance of tzedakah and provides them with the opportunity to effect positive change in their community.

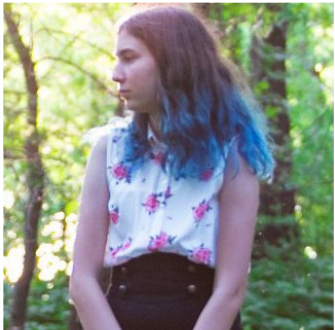
Participants gain an understanding of community needs, earn the satisfaction of contributing to the community, and start on a life-long path of meaningful giving.

There are currently **406** Bar/Bat Mitzvah endowment funds held at the Jewish Foundation of Manitoba. The total accumulated value of these funds is more than **\$644,137**.

In 2019, JFM Bar/Bat Mitzvah fundholders distributed **\$10,169** to **44** different organizations as well as **\$13,372** to the Jewish Community Campership Fund.



Miles Chisick



Talia Gabor



Lily Halpern



Sophie Halpern



Benjamin Levy



Maya Levy



Michael London



Bowie Minuk



Lily Rich



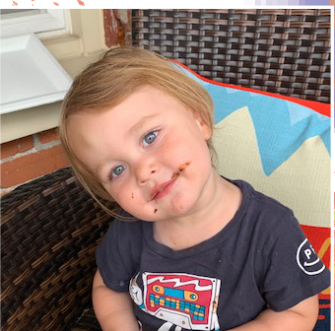
Emery Rosen



Preston Sabourin



Leo Shinewald



Saul Shinewald



Izzy Silver



-BAR /BAT MITZVAH-  
ENDOWMENT FUNDS



Help your child gain an understanding of community needs, earn the satisfaction of contributing to the community, and get him or her started on a life-long path of meaningful giving.

If a child's fund reaches **\$750** by the time they reach age **15**, the Nora & David<sup>z"l</sup> Kaufman Bar/Bat Mitzvah Fund contributes an additional **\$250**. With the fund reaching **\$1,000**, the child will now have the ability to direct the fund's yearly distribution to a charity of their choice.

To date, the Nora & David<sup>z"l</sup> Kaufman Bar/Bat Mitzvah Fund has contributed **\$67,500** to top up **270** Bar/ Bat Mitzvah Endowment Funds.

Interested in starting a Bar/Bat Mitzvah Fund on your child's behalf?

Contact Pam Minuk,  
Donor Relations Associate, 204.477.7520;  
Canada/U.S. toll-free 1.855.284.1918; or at  
[pminuk@jewishfoundation.org](mailto:pminuk@jewishfoundation.org)