

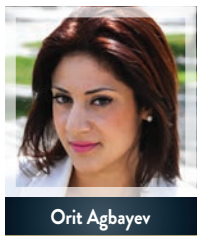


# Education Awards 2015 Report

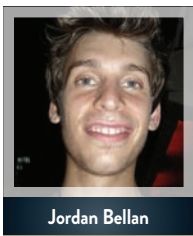
In 2015, the Jewish Foundation of Manitoba was proud to distribute \$117,283 to 50 education award recipients.

## General Education Awards

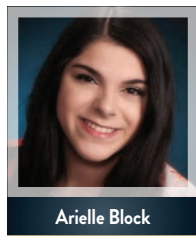
Awarded to Jewish students who are in need of financial assistance to continue post-secondary education. Consideration is also given to academics and community service.



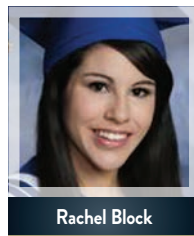
Orit Agbayev



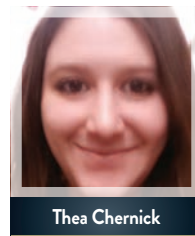
Jordan Bellan



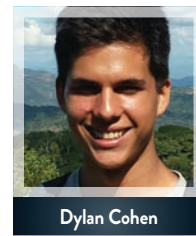
Arielle Block



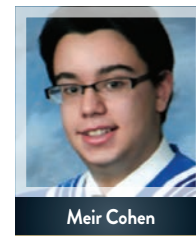
Rachel Block



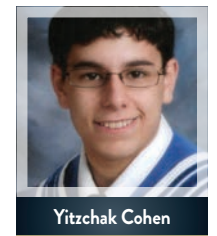
Thea Chernick



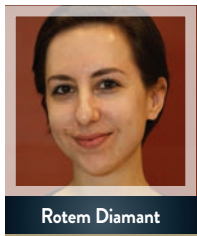
Dylan Cohen



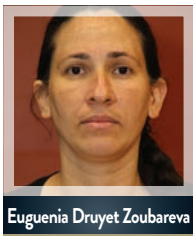
Meir Cohen



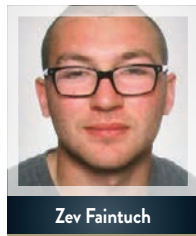
Yitzhak Cohen



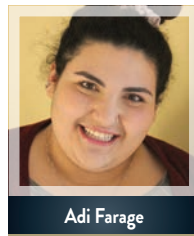
Rotem Diamant



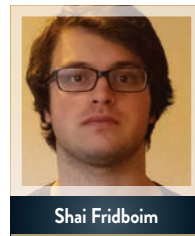
Eugenia Druyet Zoubarova



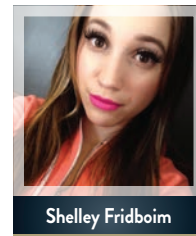
Zev Faintuch



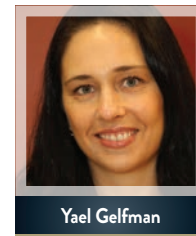
Adi Farage



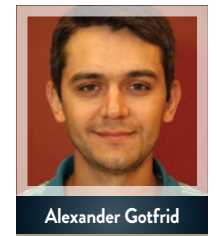
Shai Fridboim



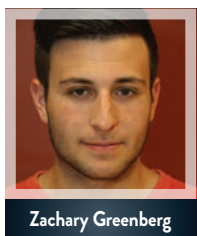
Shelley Fridboim



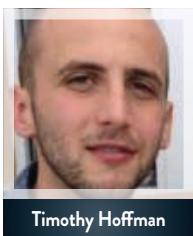
Yael Gelfman



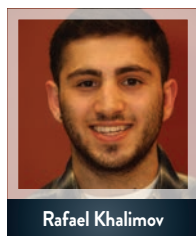
Alexander Gotfrid



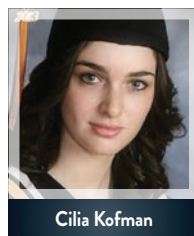
Zachary Greenberg



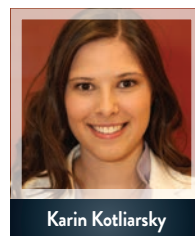
Timothy Hoffman



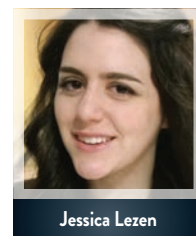
Rafael Khalimov



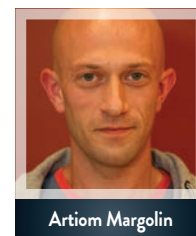
Cilia Kofman



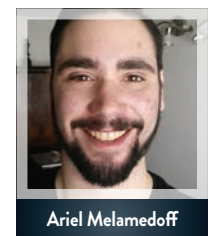
Karin Kotliarsky



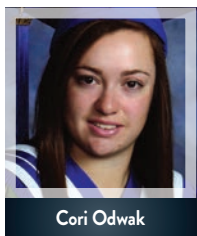
Jessica Lezen



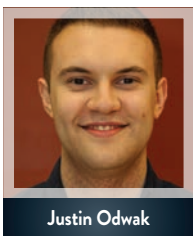
Artiom Margolin



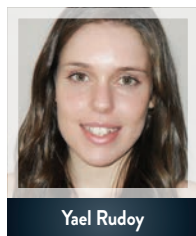
Ariel Melamedoff



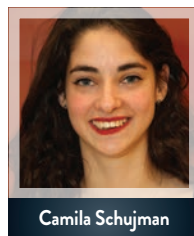
Cori Odwak



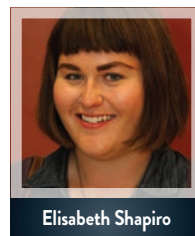
Justin Odwak



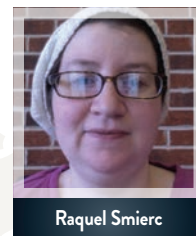
Yael Rudoy



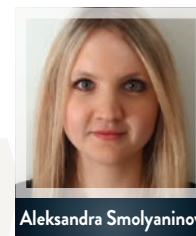
Camila Schujman



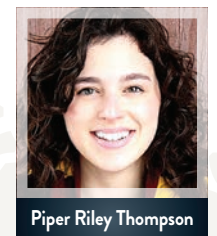
Elisabeth Shapiro



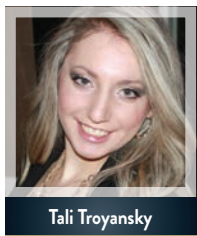
Raquel Smierc



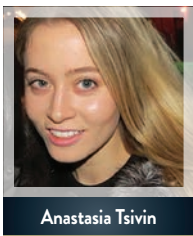
Aleksandra Smolyaninov



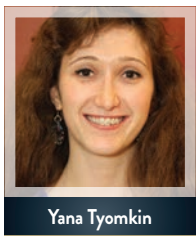
Piper Riley Thompson



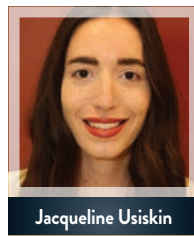
Tali Troyansky



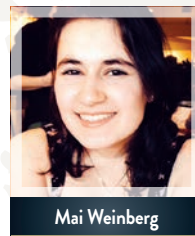
Anastasia Tsivin



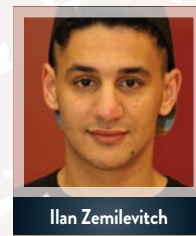
Yana Tyomkin



Jacqueline Usiskin



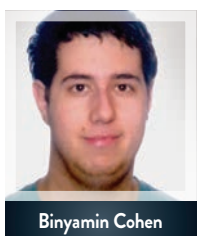
Mai Weinberg



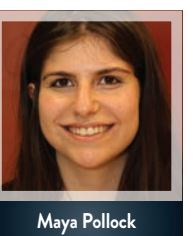
Ilan Zemilevitch

## Awards for Judaic Studies and/or Studies in Israel

Awarded to individuals to encourage them in their pursuit of an education in Judaic studies or studies in Israel.



Binyamin Cohen



Maya Pollock





## SCHOLARSHIP FUNDS

Donors may establish scholarship funds to benefit students of a particular school, geographic region, educational discipline, gender, or other designation.

You may add to your scholarship fund at any time and so can others who share your interests in the community.

### Advantages of establishing a scholarship fund

#### PERSONAL

Establish a scholarship fund in honour or in memory of a loved one, or name it to recognize your family, business, or a particular interest.

#### ENDURING

You can make a permanent impact on the lives of recipients, who in turn are likely to continue the tradition of helping others.

#### FLEXIBLE

Provide a scholarship now or plan a gift from your estate. The Jewish Foundation of Manitoba can accept donations of most assets including cash, securities, and life insurance policies\*.

\*Please contact the Foundation for more information.

### Who should establish a scholarship fund?

A scholarship fund is ideal for individuals, families, businesses, and groups who:

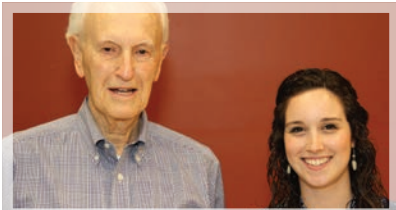
- Value education •
- Want to give others an opportunity to pursue their dreams •
- Want to establish a legacy to honour or remember someone •

To establish a scholarship fund or for more information, please contact the Jewish Foundation of Manitoba.

For a complete list of all awards and guidelines, see our website at [www.jewishfoundation.org](http://www.jewishfoundation.org).

### Mark & Dorothy Danzker Scholarship

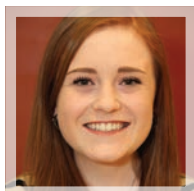
Awarded to an individual in a post-graduate degree program based on their academic achievements and contributions to their community.



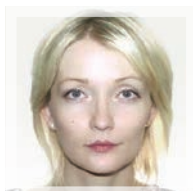
2015 recipient Melanie Baruch with Lawrence Cohen, Trustee of the Danzker estate.

### Ruth & Joe Freed and Stephen Freed and Family Academic Excellence Awards

Awarded to individuals who have demonstrated consistent academic excellence and a commitment to the Jewish community.



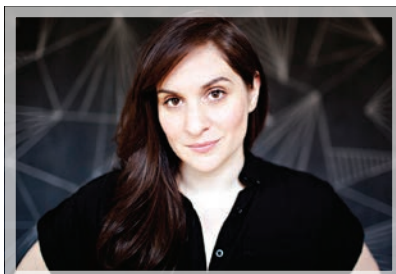
Erin Minuk



Anastasia Zakon

### Mona Gray Creative Arts Scholarship

Awarded to an individual pursuing graduate studies in an arts-related program.



2015 recipient Alix Sobler

### Joel A. Weinstein Memorial Scholarship

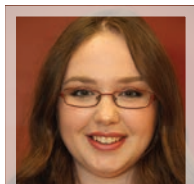
Awarded to an individual who is pursuing their education in Israel and who has demonstrated academic excellence, a commitment to the Jewish community, and volunteerism.



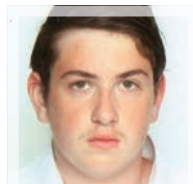
2015 recipient Baillie Shuster (second from left) with Cathie Weinstein, EJ Weinstein, & Benjamin Weinstein.

### George Finkle Memorial Scholastic Awards

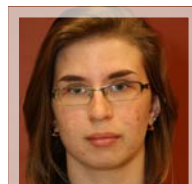
Awarded to Jewish high school students who are in need of financial assistance to begin post-secondary education.



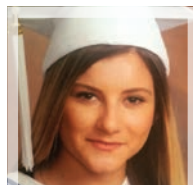
Shira Brand



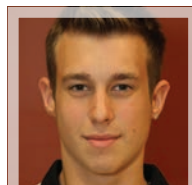
Sagi Levi



Miriam Mazor



Nikole Shaposhnik



Tal Tufeld

### Saul & Claribel Simkin Centre Family Education Award

Awarded to the child of a long-serving Simkin Centre employee to assist with his or her post-secondary education. It was not awarded in 2015.

## The Jewish Foundation of Manitoba thanks the donors who have made our academic awards possible:

The Israel & Babs Asper Charitable Fund  
 Cecilia Asper Fund  
 Associated Retail Grocers (A.R.G.) of Winnipeg Fund  
 Helen & Bernard Atnikov Fund  
 B'nay Abraham Sisterhood Scholarship Fund  
 Samuel & Mary Badner Memorial Scholarship Fund  
 Ziona Bellan Memorial Scholarship Fund  
 David & Esther Birn Family Fund  
 Molly & Charles Chapman Educational Fund  
 Phyllis & Saul Chochinov Memorial Fund  
 Clara & Morris Teplitsky, David Teplitsky and Bertha & Harry Schwartz Memorial Fund  
 Sarah & Jack Cohen Fund  
 Meyer & Rita Cosman Fund  
 Mark & Dorothy Danzker Perpetual Trust Fund  
 George Finkle Memorial Scholastic Bursary  
 Harry Fishman Scholarship Fund

Rivke Fleisher Memorial Scholarship Fund  
 Ruth & Joe Freed and Stephen Freed & Family Academic Excellence Awards  
 Rube & Sharon Ganetsky Educational Fund  
 In Memory of Chana Rivka Goldstein  
 In Memory of Joseph & Dvora Goldstein  
 Dr. Philip & Edah Goldstein Memorial Fund  
 Mona Gray Creative Arts Scholarship Fund  
 Rita Gunn & Greg Mason Scholarship Fund  
 Susan & Sandor Guttman Scholarship Fund  
 Jewish Women's Musical Club Fund  
 In Memory of Mico Kaftal  
 Harvey & Sima Kay Scholarship Fund  
 Jim & Syble Klady Fund  
 Orah & Soody Kleiman Educational Fund  
 Deena Kravetsky Memorial Yeshiva Fund  
 Dr. & Mrs. Paul P. Krolik, DDS Endowment Fund

Lazar & Chana (Annie) Mozes Scholarship Fund  
 Sharon & Mel Myers Fund  
 Marym & Izzy Peltz Fund  
 Harvey L. Pfeffer Scholarship Fund  
 Pilat Family Fund  
 Alfred & Rosalie Richman  
 Eli Ross Fund  
 Berte Rubin Fund  
 Berte Sarner Rubin in memory of Benjamin & Sara Sarner  
 Max & Jean Ruder Perpetual Scholarship Fund  
 Allan Sair Scholarship Fund  
 Chancellor Harvey L. Sectar Scholarship Education Fund  
 Saul & Claribel Simkin Centre Family Education Fund  
 Ari Schaefer Bar Mitzvah Fund  
 Miriam Atnikov Segal Scholarship Fund

Serebnitski Family Fund  
 Patty & Jack Sherman Memorial Fund  
 Minnie Shore Jewish Education Scholarship Fund  
 Annice Shreiber Fund  
 Barry Snaper and Sharon Oberlander Family Fund  
 Ann Springman Memorial Fund  
 Rose & Moe Sucharov Jewish Education Fund  
 Hana & Pinchas Vinchelstein Memorial Scholarship Fund  
 Joel Weinstein Memorial Scholarship Fund  
 Winnipeg Jewish Orphanage Alumni Fund  
 Zionist Educational Trust

For more information about the Jewish Foundation of Manitoba, please call or visit our office on the 4th floor of the Asper Jewish Community Campus.

123 Doncaster Street | Suite C400 | Winnipeg, Manitoba R3N 2B2  
 Phone: 204.477.7520 | US/Canada Toll Free: 1.855.284.1918  
 Donation Line: 204.477.7525

[info@jewishfoundation.org](mailto:info@jewishfoundation.org)  
[www.jewishfoundation.org](http://www.jewishfoundation.org)

@JFM\_MB



**JEWISH FOUNDATION**  
 — OF MANITOBA —