



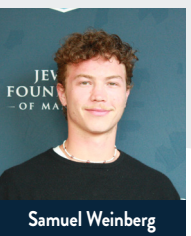
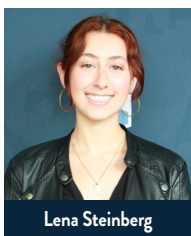
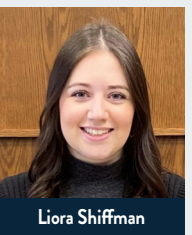
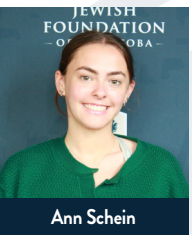
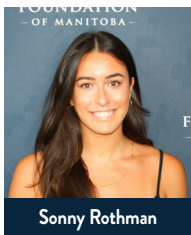
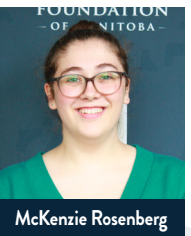
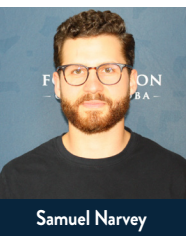
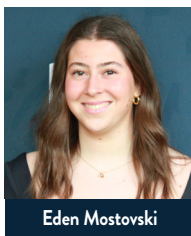
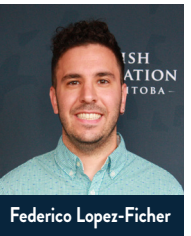
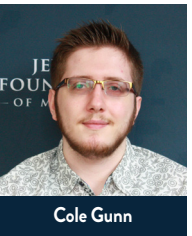
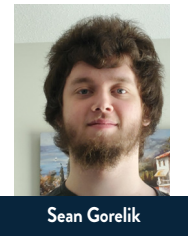
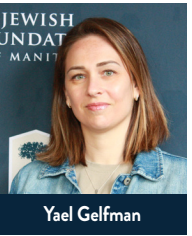
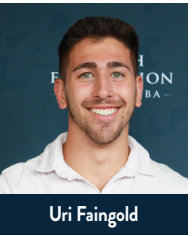
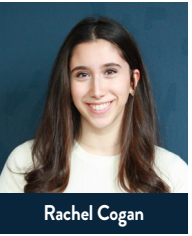
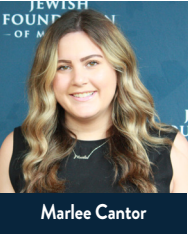
JEWISH  
FOUNDATION  
— OF MANITOBA —



TWENTY-TWENTY-TWO  
EDUCATIONAL AWARDS  
& SCHOLARSHIPS

General Educational Awards

Awarded to Jewish students who are pursuing post-secondary education. Consideration is given to academics, community service, and/or financial need.



In 2022, the Jewish Foundation  
of Manitoba was proud to award

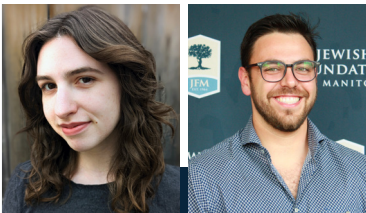
\$188,750

to

68

EDUCATION AWARD AND  
SCHOLARSHIP RECIPIENTS.





**Ruth & Joe Freed and Stephen Freed and Family Academic Excellence Awards**  
Awarded to individuals who have demonstrated consistent academic excellence and a commitment to the Jewish community.

**2022 recipients: Nina Eilberg and Max Kliman**



**Mark & Dorothy Danzker Scholarship**  
Awarded to an individual in a post-graduate degree program based on their academic achievements and contributions to their community.

**2022 recipient: Alexis Koffman**



**Mona Gray Creative Arts Scholarship**  
Awarded to a Bachelor's degree graduate or to a 3rd or 4th year undergraduate student who is pursuing a university degree in one of the following areas: creative writing, film, fine arts, music, theatre or dance.

**2022 recipient: Mishelle Aminov Kosonovsky**

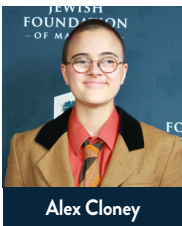


**Saul & Claribel Simkin Centre Family Education Award**  
Awarded to the child of a long-serving Simkin Centre employee to assist with his or her post-secondary education.

**2022 recipient: Chaya Tabac**

**George Finkle Memorial Scholastic Awards**

Awarded to Jewish high school students who are beginning post-secondary education.



Alex Cloney



Yasmin Gelfman



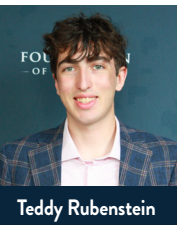
Liel Golubchik



Nathaniel Lisak



Ben Margulets



Teddy Rubenstein

**Judaic Studies and/or Studies in Israel**

Awarded to individuals to encourage them in their pursuit of an education in Judaic studies or studies in Israel.



Boaz Greenfield



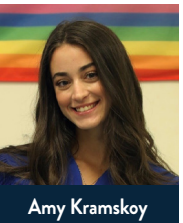
Noah Greenfield



Kelly Hiebert



Kolya Kosmin-Rose



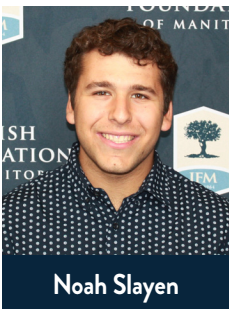
Amy Kramskoy



Matthew J. London

**Joel A. Weinstein Memorial Scholarship**

Awarded to an individual who is pursuing their education in Israel and who has demonstrated academic excellence, a commitment to the Jewish community, and volunteerism.



Noah Slayen

**Irma Penn in memory of Marvin Penn Educational Award**

Awarded to students taking post-secondary Judaic Studies courses or teachers in the Jewish / Hebrew school system enrolled or entering a post-graduate program to further their professional development.



Marina Lisak



**EDUCATIONAL AWARDS & SCHOLARSHIPS**

Donors may establish scholarship funds to benefit students of a particular school, geographic region, educational discipline, gender, or other designation.

You may add to your scholarship fund at any time and so can others who share your interests in the community.

**Advantages of establishing a scholarship fund**

**PERSONAL**

Establish a scholarship fund in honour or in memory of a loved one, or name it to recognize your family, business, or a particular interest.

**ENDURING**

You can make a permanent impact on the lives of recipients, who in turn are likely to continue the tradition of helping others.

**FLEXIBLE**

Provide a scholarship now or plan a gift from your estate. The Jewish Foundation of Manitoba can accept donations of most assets including cash, securities, and life insurance policies\*.

\*Please contact the Foundation for more information.

**Who should establish a scholarship fund?**

A scholarship fund is ideal for individuals, families, businesses, and groups who:

- Value education •
- Want to give others an opportunity to pursue their dreams •
- Want to establish a legacy to honour or remember someone •

To establish a scholarship fund or for more information, please contact the Jewish Foundation of Manitoba.

**For a complete list of all awards and guidelines, see our website at [www.jewishfoundation.org](http://www.jewishfoundation.org).**

**The Jewish Foundation of Manitoba thanks the following funds that have made our academic awards possible:**

Norman & Lesia Adelberg Scholarship Fund  
Cecilia Asper Fund  
The Israel & Babs Asper Charitable Fund  
Associated Retail Grocers (A.R.G.) of Winnipeg Fund  
Helen & Bernard Atnikov Fund  
Samuel & Mary Badner Memorial Scholarship Fund  
Ziona Bellan Memorial Scholarship Fund  
Cynthia Berney Fund  
David & Esther Birn Family Fund  
B'nay Abraham Sisterhood Scholarship Fund  
Dee & Harold Buchwald Scholarship Fund  
Molly & Charles Chapman Educational Fund  
Phyllis & Saul Chochinov Memorial Fund  
Sarah & Jack Cohen Fund  
Meyer & Rita Cosman Fund  
Marsha Cowan Scholarship Fund  
Jerry Dorfman Memorial Scholarship Fund  
George Finkle Memorial Scholastic Award  
Harry Fishman Scholarship Fund

Rivke Fleisher Memorial Scholarship Fund  
Ruth and Joe Freed and Stephen Freed & Family Academic Excellence Awards  
Rube & Sharon Ganetsky Educational Fund  
Dr. Philip & Edah Goldstein Memorial Fund  
In Memory of Chana Rivka Goldstein Fund  
In Memory of Joseph & Dvora Goldstein Fund  
Mona Gray Creative Arts Scholarship Fund  
Susan & Sandor Guttman Scholarship Fund  
Jewish Women's Musical Club Fund  
In Memory of Mico Kaftal Fund  
In Memory of Hope Kahane Fund  
Harvey & Sima Kay Scholarship Fund  
Jim & Syble Klady Fund  
Orah & Soody Kleiman Educational Fund  
Deena Kravetsky Memorial Yeshiva Fund  
In loving memory of my beloved husband, Dr. Paul P. Krolik, DDS  
Michael Leipsic Jewish Student Athlete Scholarship Fund  
Rita Gunn & Greg Mason Scholarship Fund

Lazar & Chana (Annie) Mozes Scholarship Fund  
Sharon & Mel Myers Fund  
Marym & Izzy Peltz Fund  
Irma Penn Endowment Fund in memory of Marvin Penn  
Sheila Perlmutter Education Fund  
Harvey L. Pfeffer Scholarship Fund  
Pilat-Riches Family Fund  
Sylvia & David Pollock Fund  
Alfred & Rosalie Richman Fund  
Eli Ross Fund  
Berte Sarner Rubin in memory of Benjamin & Sara Sarner University Fund  
Judge Charles Rubin & Naida Rubin Fund  
Max & Jean Ruder Perpetual Scholarship Fund  
Allan Sair Scholarship Fund  
Ari Schaefer Bar Mitzvah Fund  
Gabriel Schujman & Marcela Mangarelli Fund  
Chancellor Harvey L. Selter Scholarship Fund  
Miriam Atnikov Segal Scholarship Fund

Serebnitski Family Fund  
Patty & Jack Sherman Memorial Fund  
Minnie Shore Jewish Education Scholarship Fund  
Annice Shreiber Fund  
Saul & Claribel Simkin Centre Family Education Fund  
Barry Snaper and Sharon Oberlander Family Fund  
Ann Springman Memorial Fund  
Rose & Moe Sucharov Jewish Education Fund  
Clara & Morris Teplitsky, David Teplitsky and Bertha & Harry Schwartz Memorial Fund  
Hana & Pinchas Vinchelstein Memorial Scholarship Fund  
Joel Weinstein Memorial Scholarship Fund  
Winnipeg Jewish Orphanage Alumni Fund  
Winnipeg Jewish Schools 2017 Reunion - Judaic Studies Scholarship Fund  
Gary Wolfson Scholarship Fund  
Zionist Educational Trust



For more information about the Jewish Foundation of Manitoba, please contact us at:

123 Doncaster Street | Suite C400 | Winnipeg, Manitoba R3N 2B2  
Phone: 204.477.7520 | US/Canada Toll-Free: 1.855.284.1918

[info@jewishfoundation.org](mailto:info@jewishfoundation.org)  
[www.jewishfoundation.org](http://www.jewishfoundation.org)

- @JFM\_MB
- @jewishfoundationmb
- jewishfoundationmb
- jewish foundation of manitoba