



JFM *focus*

# THE POWER OF PHILANTHROPY

IYAR 5782 | SPRING 2022

## IMMERSED IN IMPACT

COMMUNITY IMPACT FUNDS – MAXIMUM FLEXIBILITY LEADS TO LASTING STABILITY

The Jewish Foundation of Manitoba's newly named 'Community Impact Funds' help organizations grow and thrive by supporting special projects, purchasing much-needed equipment, and offering support for capacity-building initiatives. In 2020, they emerged as our most effective and flexible tool to support urgent needs during the pandemic, providing over \$680,000 for COVID-19 relief.

Previously known as "undesignated," Community Impact Funds are a pillar of stability for the community. The decision to rebrand and rename these funds was necessary to ensure donors know that their contributions are not simply 'floating' at the JFM with no actual directive.

"When we decided to rename these funds, our goal was to create a better understanding of what they really do," says John Diamond, Chief Executive Officer of the JFM. "To call these funds 'undesignated' was painting the wrong picture, as they exist to help our community."

"It captures the purpose of what we use these funds for," says Bonnie Cham, Board Chair. "As a donor, you want to know that your donation has impact, and when the investment income goes toward something called undesignated funds, I don't think the link between the funds and the granting process was clear."

Community Impact Funds are an allocated pool of capital, the annual interest of which is distributed by the Foundation as grants through our volunteer Grants Committee. The Committee looks carefully at each submitted grant application to determine where the community will benefit from these funds. Where will the allocated funds have the most impact? How many people will they affect?



### — COMMUNITY — IMPACT FUNDS

"It is important to note that the people who make up the Grants Committee are all part of the community that these funds serve," says Diamond. "These volunteers give us a great group of ambassadors for the community whose interests parallel the community's vibrancy and sustainability."

These funds have an exceptional reach. As a member of this community, you don't have to look far to see that the impact of these funds is all around you. In the places you spend your time, in the places that assist your loved ones, these funds provide the new experiences and sustained support we need.

Community Impact Funds are a \$15.4 million pool of capital gathered from almost 1200 named funds at the Jewish Foundation of Manitoba. Anyone can establish a Community Impact Fund with a minimum initial contribution of only \$100. Funds are established for many different reasons: to commemorate a loved one, celebrate birthdays, anniversaries, and family reunions, or even just to say 'I love you!'

#### *A few 2021 distributions:*

Community Impact Funds helped the Jewish Federation of Winnipeg maximize the PJ Library program – a literacy and outreach program to the in the community. The Federation has successfully connected with close to 2100 children and their families in the 11 years since the launch of PJ Library in Winnipeg.

Community Impact Funds provided funding to create the 'Wishlist Boutique' - a free "shop" for emergency food at 1JustCity and for 'Yard Angels' - a program to help mobility or financially challenged older adults with yard maintenance at SSCOPE.

Community Impact Funds helped provide wheelchair tandem bikes and helmets for the Saul & Claribel Simkin Centre, giving many residents the opportunity to have joyful and exciting outdoor experiences.

**Consider establishing a Community Impact Fund with the Jewish Foundation of Manitoba.**

To learn more about contributing to or establishing a fund, contact Laurel Hogan, Development Associate, at (204) 477-7462 or email [lhogan@jewishfoundation.org](mailto:lhogan@jewishfoundation.org).





# A Great Light

SARAH SOMMER CHAI FOLK ENSEMBLE COMING BACK WITH A BANG

Event cancellations and postponements became the unfortunate norm for much of the early 2020s, with some annual events cancelling two and three iterations. Such was the case for the planned 2020 summer concert from the Sarah Sommer Chai Folk Ensemble (Chai) to debut their new album. A Great Light, Chai's sixth recorded album and first in close to 10 years, wrapped up recording the day before the province shut down.

This summer, two years after its originally scheduled date, Chai will showcase the album's music, musicians, and singers through a concert at the Manitoba Theatre Centre on June 16, 2022. Chai will also honour the Jewish Foundation of Manitoba at the event as a gesture of gratitude for their granting support over the years.

"We wanted to honour the Foundation, not just for what they've done for Chai, but the entire community," says Reeva Nepon, Chai's Administrative Director, now in her 21st year of involvement. "The impact became even more apparent as the Foundation stepped up for the community during the COVID-19 pandemic."

Chai was one of more than 30 community organizations to receive support from the JFM's COVID-19 Relief Funding.

"Without the Foundation, Chai would not have survived the past two years," says David Vamos, Chai's Artistic Director. "Grants from

the Foundation are what allowed us to keep going."

Vamos, whose involvement with Chai spans 20 years, explains that even though it meant delaying the release of their album for more than two years, it was important that the album be released in a live environment and not solely on streaming platforms. He describes it as a kinetic and immersive album, best experienced in its entirety with song and dance.

Rehearsals for the show began in the spring, with many performers ramping up for their first show as part of Chai.

Over the years, the JFM has provided support for Chai through many grants, with one of the most notable providing funding for a performance tour, for which Chai teamed up with the Ukrainian Dance Ensemble, Rusalka. The two embarked on a three-week tour of Ukraine and Israel, sharing one another's cultures and traditions through the performances. The tour concluded with performances at Folklorama and sold-out shows at home in Winnipeg.

**For more information on A Great Light, visit [www.chai.ca/agreatlight](http://www.chai.ca/agreatlight).**

**To support the Sarah Sommer Chai Folk Ensemble organizational endowment fund, visit [jewishfoundation.org](http://jewishfoundation.org).**



# Point, Click and Donate

SUPPORTING OUR JEWISH ORGANIZATIONS IS EASIER THAN EVER

The Jewish Foundation of Manitoba's mission is to encourage and facilitate the creation and growth of endowment funds to enable the community to realize its potential. This includes doing everything we can to support the Jewish community organizations who have entrusted us with their endowment funds. Whether it's taking the time to educate organizations about the benefits of establishing their own funds or providing a matching incentive to promote their endowment growth, the JFM is here to help.

Most recently, the Foundation updated the Organizational Endowment component of its website to create a more straightforward giving process for community supporters. For organizations who already have an endowment at the JFM, this webpage refresh is a great way to take an easy next step in continuing to build that endowment. It reaches donors where they already are - online.

Our revamped Organizational Endowment directory houses customized donation pages

for each of the organizations that currently have an endowment fund at the JFM. The directory also offers two ways to help streamline the donor experience:

First – Donors will now find a customized, organizational landing page on the JFM website which will make it simple to find and select the organization they wish to support. From here, it's an easy click to access the organization's customized donation page.

Second – organizations can embed a link to their customized donation page on their own website. Donors never need to leave the organization's website to donate.

The Jewish Heritage Centre of Western Canada recently took advantage of this method. "This simplifies the donation process for those looking at donation opportunities on our website," says Belle Jarniewski, Executive Director of JHCWC. "[Our donors] do not have to search through other sites for the information; it's easily found on ours."

At the JFM, we're trying hard to make it easier for organizations to build their endowment funds and for you to support them. It's a win-win!

For more information on Organizational Endowments, please contact Laurel Hogan, at 204.477.7462.

**The revitalized Organizational Endowment Donation portal is now live at [www.jewishfoundation.org/initiatives/organizational-endowment-funds](http://www.jewishfoundation.org/initiatives/organizational-endowment-funds).**







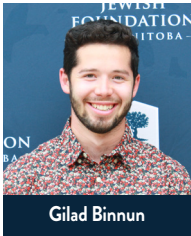
JEWISH  
FOUNDATION  
— OF MANITOBA —



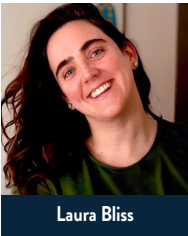
# TWENTY-TWENTY-ONE EDUCATIONAL AWARDS & SCHOLARSHIPS

## General Educational Awards

Awarded to Jewish students who are pursuing post-secondary education. Consideration is given to academics, community service, and/or financial need.



Gilad Binnun



Laura Bliss



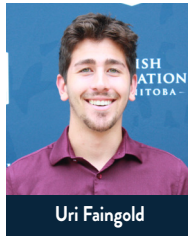
Jenna Bravo



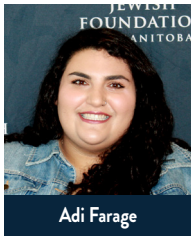
Talia Elfenbein



Kali Faingold



Uri Faingold



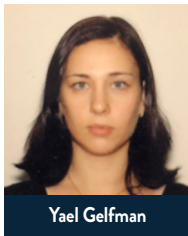
Adi Farage



Thomas Feldman



Michal Fraiter



Yael Gelfman



Isanne Goldberg



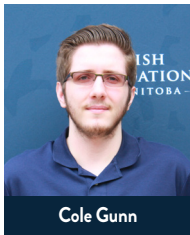
Noa Goldberg



Gabi Greenberg



Zach Greenberg



Cole Gunn



Stephanie Kalo



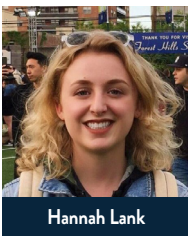
Hadas Kempner



Brett Koffman



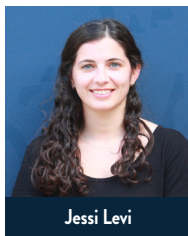
Valeria Kolomiyets



Hannah Lank



Denise Levi



Jessi Levi



Micaela Levi



Inbar Lichtenstein



Federico Lopez-Ficher



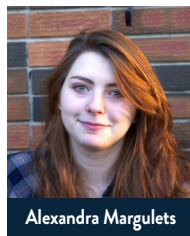
Joshua Malam



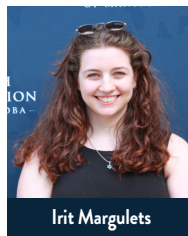
Micaela Mandelbaum



Haniel Manov



Alexandra Margulets



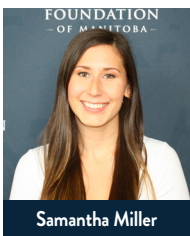
Irit Margulets



Evelin Melekh



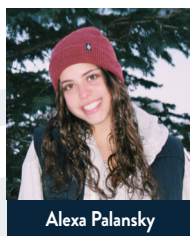
Maya Miller



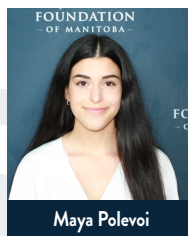
Samantha Miller



Rocio Mohadeb



Alexa Palansky



Maya Polevoi



Maya Pollock



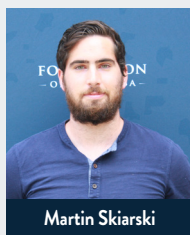
McKenzie Rosenberg



Melanie Rubin



Ariel Sherepanov



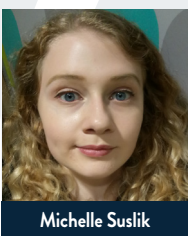
Martin Skiarski



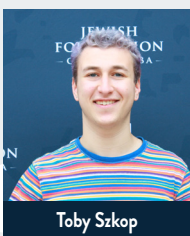
Maxim Skorodinsky



Lena Steinberg



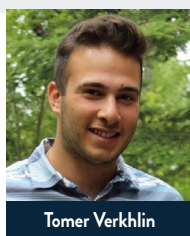
Michelle Suslik



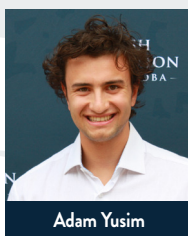
Toby Szkop



Lucas Szpigel



Tomer Verkhlin



Adam Yusim

Not pictured: **Melissa Shapiro**

In 2021, the Jewish Foundation of Manitoba  
was proud to distribute

**\$155,175**

to

**62**

EDUCATION AWARD AND  
SCHOLARSHIP RECIPIENTS.





### Judaic Studies and/or Studies in Israel

Awarded to individuals to encourage them in their pursuit of an education in Judaic studies or studies in Israel.

2021 recipients: Boaz Greenfield and Noah Greenfield



### Mark & Dorothy Danzker Scholarship

Awarded to an individual in a post-graduate degree program based on their academic achievements and contributions to their community.

2021 recipient: Sophia Hershfield



### Mona Gray Creative Arts Scholarship

Awarded to a Bachelor's degree graduate or to a 3rd or 4th year undergraduate student who is pursuing a university degree in one of the following areas: creative writing, film, fine arts, music, theatre or dance.

2021 recipient: Arielle Block



### Saul & Claribel Simkin Centre Family Education Award

Awarded to the child of a long-serving Simkin Centre employee to assist with his or her post-secondary education.

2021 recipient: Kaiya Ivankovic

### George Finkle Memorial Scholastic Awards

Awarded to Jewish high school students who are beginning post-secondary education.



Gilda Chvaicer



Emma Harris

### Irma Penn in memory of Marvin Penn Educational Award

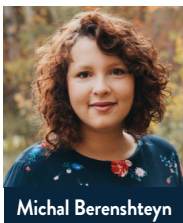
Awarded to students taking post-secondary Judaic Studies courses or teachers in the Jewish / Hebrew school system enrolled or entering a post-graduate program to further their professional development.



Sarah Sommer

### Ruth & Joe Freed and Stephen Freed and Family Academic Excellence Awards

Awarded to individuals who have demonstrated consistent academic excellence and a commitment to the Jewish community.



Michal Berenshteyn



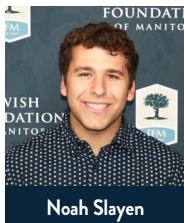
Lauren Cogan



Lindsay Cogan



Rotem Keynan



Noah Slayen



## EDUCATIONAL AWARDS & SCHOLARSHIPS

Donors may establish scholarship funds to benefit students of a particular school, geographic region, educational discipline, gender, or other designation.

You may add to your scholarship fund at any time and so can others who share your interests in the community.

### Advantages of establishing a scholarship fund

#### PERSONAL

Establish a scholarship fund in honour or in memory of a loved one, or name it to recognize your family, business, or a particular interest.

#### ENDURING

You can make a permanent impact on the lives of recipients, who in turn are likely to continue the tradition of helping others.

#### FLEXIBLE

Provide a scholarship now or plan a gift from your estate. The Jewish Foundation of Manitoba can accept donations of most assets including cash, securities, and life insurance policies\*.

\*Please contact the Foundation for more information.

### Who should establish a scholarship fund?

A scholarship fund is ideal for individuals, families, businesses, and groups who:

- Value education •
- Want to give others an opportunity to pursue their dreams •
- Want to establish a legacy to honour or remember someone •

To establish a scholarship fund or for more information, please contact the Jewish Foundation of Manitoba.

For a complete list of all awards and guidelines, see our website at [www.jewishfoundation.org](http://www.jewishfoundation.org).

## The Jewish Foundation of Manitoba thanks the following funds that have made our academic awards possible:

Norman & Lesia Adelberg Scholarship Fund  
Cecilia Asper Fund  
The Israel & Babs Asper Charitable Fund  
Associated Retail Grocers (A.R.G.) of Winnipeg Fund  
Helen & Bernard Atnikov Fund  
Samuel & Mary Badner Memorial Scholarship Fund  
Ziona Bellan Memorial Scholarship Fund  
Cynthia Berney Fund  
David & Esther Birn Family Fund  
B'nay Abraham Sisterhood Scholarship Fund  
Dee & Harold Buchwald Scholarship Fund  
Molly & Charles Chapman Educational Fund  
Phyllis & Saul Chochinov Memorial Fund  
Sarah & Jack Cohen Fund  
Meyer & Rita Cosman Fund  
Jerry Dorfman Memorial Scholarship Fund  
George Finkle Memorial Scholastic Award  
Harry Fishman Scholarship Fund

Rivke Fleisher Memorial Scholarship Fund  
Ruth & Joe Freed and Stephen Freed & Family Academic Excellence Awards  
Rube & Sharon Ganetsky Educational Fund  
Dr. Philip & Edah Goldstein Memorial Fund  
In Memory of Chana Rivka Goldstein Fund  
In Memory of Joseph & Dvora Goldstein Fund  
Mona Gray Creative Arts Scholarship Fund  
Susan & Sandor Guttman Scholarship Fund  
Jewish Women's Musical Club Fund  
In Memory of Mico Kaftal Fund  
In Memory of Hope Kahane Fund  
Harvey & Sima Kay Scholarship Fund  
Jim & Syble Klady Fund  
Orah & Soody Kleiman Educational Fund  
Deena Kravetsky Memorial Yeshiva Fund  
In loving memory of my beloved husband, Dr. Paul P. Krolik, DDS  
Michael Leipsic Jewish Student Athlete Scholarship Fund

Rita Gunn & Greg Mason Scholarship Fund  
Lazar & Chana (Annie) Mozes Scholarship Fund  
Sharon & Mel Myers Fund  
Marym & Izzy Peltz Fund  
Irma Penn Endowment Fund in memory of Marvin Penn  
Sheila Perlmutter Education Fund  
Harvey L. Pfeffer Scholarship Fund  
Pilat-Riches Family Fund  
Sylvia & David Pollock Fund  
Alfred & Rosalie Richman Fund  
Eli Ross Fund  
Berte Sarner Rubin in memory of Benjamin & Sara Sarner University Fund  
Judge Charles Rubin & Naida Rubin Fund  
Max & Jean Ruder Perpetual Scholarship Fund  
Allan Sair Scholarship Fund  
Ari Schaefer Bar Mitzvah Fund  
Gabriel Schujman & Marcela Mangarelli Fund

Chancellor Harvey L. Selter Scholarship Fund  
Miriam Atnikov Segal Scholarship Fund  
Serebnitski Family Fund  
Patty & Jack Sherman Memorial Fund  
Minnie Shore Jewish Education Scholarship Fund  
Annice Shreiber Fund  
Saul & Claribel Simkin Centre Family Education Fund  
Barry Snaper and Sharon Oberlander Family Fund  
Ann Springman Memorial Fund  
Rose & Moe Sucharov Jewish Education Fund  
Clara & Morris Teplitsky, David Teplitsky and Bertha & Harry Schwartz Memorial Fund  
Hana & Pinchas Vinchelstein Memorial Scholarship Fund  
Joel Weinstein Memorial Scholarship Fund  
Winnipeg Jewish Orphanage Alumni Fund  
Winnipeg Jewish Schools 2017 Reunion - Judaic Studies Scholarship Fund  
Gary Wolfson Scholarship Fund  
Zionist Educational Trust



For more information about the Jewish Foundation of Manitoba, please contact us at:

123 Doncaster Street | Suite C400 | Winnipeg, Manitoba R3N 2B2  
Phone: 204.477.7520 | US/Canada Toll-Free: 1.855.284.1918

[info@jewishfoundation.org](mailto:info@jewishfoundation.org)  
[www.jewishfoundation.org](http://www.jewishfoundation.org)

[@JFM\\_MB](https://www.instagram.com/@JFM_MB)  
[@jewishfoundationmb](https://www.instagram.com/@jewishfoundationmb)  
[facebook.com/jewishfoundationmb/](https://www.facebook.com/jewishfoundationmb/)









# NEW FUNDS ESTABLISHED IN 2021

The Jewish Foundation of Manitoba would like to recognize all our new funds that were established in 2021. The Board of Directors thanks you for your commitment and generosity.

## ORGANIZATIONAL ENDOWMENT FUNDS

- Saul & Ida Alpern (GWEN SECTER)
- Marjorie Blankstein and Family (JEWISH HERITAGE - ARCHIVE)
- Sharon Bronstone (ALEPH-BET)
- Sharon Bronstone (JCFS)
- Class of 2009 (GRAY ACADEMY)
- Class of 2021 (GRAY ACADEMY)
- Liuba Dimerman Memorial Fund (GRAY ACADEMY)
- Debbie Gray (JEWISH HERITAGE - ARCHIVE)
- Harry & Mildred Gutkin (JEWISH HERITAGE)
- Belle Jarniewski Fund for Holocaust Remembrance and Combatting Antisemitism (HOLOCAUST EDUCATION CENTRE)
- Amy Karlinsky & Bryan Magnusson (JEWISH HERITAGE - ARCHIVE)
- Ruth Matas (LEAVE MORE THAN MEMORIES)
- Jeff Morgan Memorial Fund (CHESSED SHEL EMES)
- Novek Family Endowment (WINNIPEG JEWISH THEATRE)
- Leonard & Ruth Carol Podheiser (HOLOCAUST EDUCATION CENTRE)
- Bridges for Peace Endowment Fund (BRIDGES FOR PEACE)
- Richard & Joanne Rothberg (RADY JCC)
- Ben Rubin Art Award (GRAY ACADEMY)
- Ben Rykiss Memorial Fund (JCFS)
- Tannis & Zivan Saper Family (CAMP MASSAD)
- Elaine & Sherwood Sharfe (JEWISH HERITAGE - ARCHIVE)
- Larry & Tova Vickar, Children and Grandchildren (JEWISH HERITAGE - ARCHIVE)
- Paul & Jackie Winestock (HOLOCAUST EDUCATION CENTRE)
- Sheldon & Florence Zamick Family (BEN-GURION UNIVERSITY)

## DESIGNATED & DONOR-ADVISED FUNDS

Warren Marvin Gunn Memorial Fund  
Marshall & Tannis Peikoff Family Fund

## BAR/BAT MITZVAH FUNDS

Sam Di Cresce Bar Mitzvah Fund  
Lev Kravetsky Bar Mitzvah Fund  
Isaiah Charlie Tsoulhas Posner Bar Mitzvah Fund  
Jesse Ray Posner Bar Mitzvah Fund  
Zachary Frank Posner Bar Mitzvah Fund  
Ayla Rachel Thomas Bat Mitzvah Fund  
Mason Vickar Bar Mitzvah Fund  
Vaughn Vickar Bar Mitzvah Fund  
Sylvie Jean Weinstein Bat Mitzvah Fund  
Abby Zentner Bat Mitzvah Fund  
Emma Zentner Bat Mitzvah Fund

## FIELD OF INTEREST FUNDS

Gary Borger (SPECIAL NEEDS)  
Patricia Carlson Fund in support of Youth Initiatives (CAMPERSHIPS)  
Maxa Chisick in honour of her 3 amazing granddaughters: Lyla Bea, Talia Lee, Maya Jordan - Future Women Philanthropists (WOMENS)  
Marsha Cowan Scholarship (SCHOLARSHIP)  
Dr. Heather Diamond (WOMENS)  
Mara Koven-Lapointe (WOMENS)  
Susan Rogers (SENIORS)  
Susan Rogers (WOMENS)  
Freda Steel (WOMENS)  
Fay & Clifford<sup>z</sup> Swartz and Family (SENIORS)  
Joy Winchell (WOMENS)  
Myra Wolch Memorial Fund (WOMENS)  
Ken Zaifman (SPECIAL NEEDS)

## COMMUNITY IMPACT FUNDS

The Amphicar Experience  
Patty & Sam Bay Memorial Fund  
Susan Billinkoff and Family Fund  
Patricia Carlson Fund  
Jack Cohen Memorial Fund  
Shalom Coodin 'I Love You' Fund  
Nate & Toots Fingold Family Fund  
Esther Gotfried Memorial Fund  
Sara Gray Fund  
Phyllis Kluner Hatskin Memorial Fund  
Jeff Hirsch 'I Love You' Fund  
Benji Itzkow & Eleni Wener Family Fund  
Jack Katz 'I Love You' Fund  
Sari Kives Birthday Fund  
Marshall S. Kneller Memorial Fund  
Shirley Kozlowich Memorial Fund  
Myles Kraut 'Four-Legged Friends' Fund  
Leah Leibl Fund  
Tracy Price Fund  
Leon & Faye Raber Endowment Fund  
Saul & Sylvia Scott Memorial Fund  
Francie Bay Smith & Arnold Smith Fund  
Esther Stewart Memorial Fund  
Jody Tapper and Sandy Tapper Fund  
Fritzi Telpner Memorial Fund  
Sharon Goszer-Tritt & Steven Tritt Family Fund  
Hymie Weinstein 'I Love You' Fund  
Paul Winestock 'I Love You' Fund  
Sharon & Sid Wolchock Family Fund  
Harriet & Alex Zimmer Fund

## Would you like to establish a new fund?

Please contact Pamela Minuk, Donor Services, by telephone at 204.477.7520 or toll-free from the U.S./Canada at 1.855.284.1918 or by email at [pminuk@jewishfoundation.org](mailto:pminuk@jewishfoundation.org).

# Your Generosity at Work



-WOMEN'S-  
ENDOWMENT FUND

## Women's Endowment Fund Grants

In December 2021, the Board of Directors of the Jewish Foundation of Manitoba approved the following Women's Endowment Fund grants. The Women's Endowment Fund supports organizations and services that improve the lives of girls and women – of all backgrounds – in Manitoba.

- Gwen Secter Creative Living Centre - \$5,000**  
Funding was provided for Babas On Broadway - an eight session course focused on learning about Broadway, famous Broadway and film stars while listening to the music and participating themselves, should they choose.
- Holy Names House of Peace - \$4,441**  
Funding was provided for the purchase of a commercial washing/sanitizing dishwasher.

- Rady Jewish Community Centre - \$4,000**  
Support was provided for a series of interactive, multicultural food-based programs with the goal of sharing recipes, expertise, and life experiences focused on Jewish women from all generations, backgrounds, and cultures.
- Safe Housing and Directed Empowerment (S.H.A.D.E.) - \$7,500**  
Support was provided for a 12-week group program on healing from domestic abuse/family violence and learning about healthy relationships.

- Shalom Residences - \$4,540**  
Funding was provided for the interior repainting of 7 Daffodil Street, home to 3 women with intellectual disabilities.
- To learn more about JFM grants and the application process, visit [www.jewishfoundation.org](http://www.jewishfoundation.org) or contact Marla Aronovitch, Director of Operations & Grants, at [maronovitch@jewishfoundation.org](mailto:maronovitch@jewishfoundation.org) or 204.477.7520 or toll-free at 1.855.284.1918.*

**Board of Directors**  
*Officers/Executive*  
Dr. Bonnie Cham  
CHAIR  
Dan Blankstein  
TREASURER  
Jeff Lieberman  
MEMBER-AT-LARGE

**Directors**  
Lainey Bokhaut  
Laura Diamond  
Dr. Sharon Goszer-Tritt  
Steven Hyman  
Uri Kraut  
Dr. Daniel P. Levin  
Dr. Alex Serebnitski  
Dafna Shore  
Justice Freda Steel  
Richard L. Yaffe, Q.C., Past-Chair  
Gustavo Zentner, Ex-Officio

**Governors**  
Sheldon Berney  
Marjorie Blankstein, C.M., O.M.  
Yhetta M. Gold, C.M., O.M.  
Hon. Richard H. Kroft, C.M.  
Lillian Neaman  
Gordan M. Pullan, Q.C.  
Harvey L. Spector, C.M., O.M.  
Joseph J. Wilder, Q.C.

**Jewish Foundation of Manitoba USA, Inc.**  
**Directors**  
Dr. Bonnie Cham  
Joel J. Dudeck  
Jacqueline Simkin  
Richard L. Yaffe, Q.C.

**Staff**  
John W. Diamond, B.A., LL.B.  
CHIEF EXECUTIVE OFFICER  
Ian Barnes, CPA, CGA  
CHIEF FINANCIAL OFFICER  
Marla Aronovitch  
DIRECTOR OF OPERATIONS & GRANTS  
Patti Boorman  
DIRECTOR OF ADMINISTRATION  
Stephanie Casar  
DIRECTOR OF DEVELOPMENT & GIFT PLANNING  
Laurel Hogan  
DONOR DEVELOPMENT ASSOCIATE  
Lynda Joyal  
ACCOUNTANT  
Josh Kerr  
MARKETING & EVENTS ASSOCIATE  
Pam Minuk  
DONOR SERVICES  
Tracy Price  
EXECUTIVE ASSISTANT  
Drew Unger  
DIRECTOR OF MARKETING & COMMUNICATIONS  
Jennifer Wood  
MANAGER OF INFORMATION TECHNOLOGY

**JFM Focus Newsletter**  
Drew Unger  
EDITOR  
Josh Kerr  
WRITER

**Jewish Foundation of Manitoba**  
Suite C400, 123 Doncaster Street  
Winnipeg, Manitoba  
R3N 2B2  
Phone: 204.477.7520  
U.S./Canada toll-free: 1.855.284.1918  
Donation Line: 204.477.7525  
[info@jewishfoundation.org](mailto:info@jewishfoundation.org)  
[www.jewishfoundation.org](http://www.jewishfoundation.org)

[@JFM\\_MB](https://twitter.com/JFM_MB)  
[@jewishfoundationmb](https://www.instagram.com/jewishfoundationmb)  
[facebook.com/jewishfoundationmb/](https://www.facebook.com/jewishfoundationmb/)

Questions or comments about JFM Focus? Contact Drew Unger, Director of Marketing & Communications.  
[dunger@jewishfoundation.org](mailto:dunger@jewishfoundation.org) | 204.477.7520 | Toll-free U.S./Canada 1.855.284.1918