



JFM *focus*

THE POWER OF PHILANTHROPY

NISAN 5784 | SPRING 2024

THE MILLION DOLLAR MATCH

NEW MATCHING INITIATIVE AIMS TO THANK DONORS FOR ALL THEY HAVE DONE

On March 27, at our 60th Anniversary Evening, the JFM launched the Million Dollar Match incentive program. After months of brainstorming and strategic planning, we are thrilled to introduce this initiative as a testament to our donors' commitment to their community.

When the Foundation was created in 1964, there were 119 initial donors with 12 established funds. Today, our database has over 4,500 funds and over 30,000 individual donor names.

Every contribution during our history, no matter the dollar amount, has played a pivotal role, and now, this year, the JFM will reach an unbelievable milestone: over 100 million dollars in grants since our inception. The JFM stands today as a testament to our Donors' care for our future.

The credit for these milestones, both the granting benchmark and the longevity of our service, belongs to our donors, and to celebrate the achievement, we wanted to give back.

In the months leading up to where we are now, we brainstormed about how best to celebrate.

As we thought, we kept the spotlight on our community, people like yourselves, who continue to give back. Your support highlights the community-focused mindset that so many of us share.

"We turned our eyes back toward our strategic plan for 2022 and beyond, and one

goal became clear," says John Diamond, CEO. "We wanted to support our community in a way that, in turn, allows our donors to have even more impact as we head into the future."

Out of these discussions, the Million Dollar Match was born. This matching program is designed to encourage and amplify the impact of individual donors and families within our community. Just as our donors have shown such tremendous dedication to us, the Jewish Foundation of Manitoba is equally committed to the future of our community.

The Foundation will match all new gifts from individuals up to \$18,000.

In Jewish tradition, the number 18, or "chai," symbolizes life and good luck, reflecting the strength and resilience of our community. The matching opportunity extends to new contributions to the Foundation until the million dollar match is fully utilized.

"We think this program gives a great opportunity and incentive for community members to strengthen, or establish, a lasting legacy in Manitoba," says Diamond. "Whether you donate frequently or want to start your philanthropic journey, the Million

Dollar Match program offers a gateway to meaningful involvement and impact."

As part of the program, we are excited to announce that our monthly donors are also eligible for matching. Monthly giving is convenient and maintains consistent engagement for donors' philanthropic goals each year.

In last year's annual report, we shared the perspective of one donor who emphasized his appreciation for monthly giving. He noted that committing to regular contributions kept him engaged and motivated, allowing him to uphold his commitment to giving back to the community. It takes away his ability to not give back.

As we celebrate our 60th year, we invite you to join us in laying the groundwork for the next 60 years of community impact. Together, through the Million Dollar Match, we can maintain the brightness in our community and fortify it for generations to come.

Thank you for your continued support and dedication to the Jewish Foundation of Manitoba. With your partnership, we look forward to building a legacy of compassion, generosity, and community for years to come.

JEWISH FOUNDATION OF MANITOBA
**million
DOLLAR MATCH**

Join our *Million Dollar Matching* initiative open to *all donors!*
This is your chance to *double your gifts up to \$18,000.*

*A great opportunity for
everyone to get involved!*

TAKE ADVANTAGE TODAY!
CALL THE FOUNDATION OFFICES AT 204.477.7520
OR VISIT WWW.JEWISHFOUNDATION.ORG



RE-IMAGINING CANCER CARE

JFM GRANT PROVIDES ACCESS TO INFORMATION FOR COMMUNITIES

Access to cancer care has been a longstanding challenge for many underserved communities in Manitoba, increasing the number of cases, and affecting the survival rate. Recognizing this need, CancerCare Manitoba (CCMB) and the Manitoba Metis Federation created the Community Profiles Website with the help of a JFM Community Impact Grant.

The site was designed to provide options for individuals in underserved communities who are facing or have a cancer diagnosis, with information like where to go for treatment, where they can be seen, and how they can get there.

"We don't want any Manitoban not to be able to receive the care they need," says Sharon Loewen, Development Manager at CancerCare Manitoba Foundation Inc. "We want to remove any barriers there may be for these people."

A key aspect of this initiative lies in its collaborative approach. Partnering with indigenous organizations across Manitoba allows the website to cater to the community's needs.

"When working with northern communities and underserved populations, information

is key," says Loewen. "By using these partnerships, we're able to make sure that patients have accurate and relevant information for their situations."

The website provides resources for those navigating their diagnoses with information about treatment options, healthcare facilities, transportation logistics, childcare support, and more. The platform enables individuals to make informed decisions as they confidently navigate their cancer journey.

Loewen explains that another terrific part of the project was the creation of the logo.

Designed by Indigenous artists, each item represents a community served by this resource. The logo acts as a piece that gives the communities a sense of pride when others receive help as well.

The website helps tackle an issue that has been around for a long time and will continue to be relevant, though it will ultimately help in the fight against it moving forward.

"We are confident that this resource can make a huge difference in these communities," says Loewen. "We may not feel the change immediately, but in the coming years, it will



have a terrific impact, reducing the number of cases and helping to improve survival rates."

Launched in late 2023, this site has already begun to affect the availability and accessibility of cancer care accessibility across the province. The site has already seen significant engagement with over 5,000 users and has begun to expand to support many health care areas in the province.

We invite you to visit ccmbindigenouscommunityprofiles.ca to see the entirety of the communities served, and the resources offered.

CancerCare Manitoba Community Profiles

First Nations, Métis and Inuit Community Profiles provide community information and resources that can be used to support people with cancer.

Explore the Profiles



SUPPORT FROM SOUTH OF THE BORDER

20 YEARS OF CONTRIBUTIONS FROM JFM SUPPORTERS IN THE USA

On January 20, 2004, the Jewish Foundation of Manitoba USA, Inc. was formally incorporated in Illinois. The organization had a singular purpose—to support the charitable causes championed by its parent foundation.

By creating JFM USA, the Foundation took steps to enable tax-deductible contributions from U.S. residents.

Many supporters of the Foundation and our Jewish Community do not live in Winnipeg. Whether they are ex-pats who maintain a connection to their childhood homes, they've passed through here for a portion of their lives, or have friends who have been a part of our community, JFM supporters can be found almost anywhere.

To contribute, the minimum gift is \$1,000. These gifts must be made in USD. Contributions to JFM USA (deductible for U.S. income tax purposes) are distributed to JFM and allocated to the donor's desired endowment fund(s).

The strength of the Foundation comes from our donors and volunteers. These two groups are necessary to support our community's needs. JFM USA is a separate 501(C)(3) supporting organization to JFM. We know that our donors are spread out, and through this, our supporters south of the border have a tax-deductible option to support what means most to them.



"JFM USA is extremely convenient for our donors who desire a US charitable tax deduction," explains Ian Barnes, CFO.

For more information on how to support the JFM through JFM USA, contact our offices at 204.477.7520 or email info@jewishfoundation.org.

SEARCHING FOR SECURITY

COMMUNITY RALLIES TO SUPPORT CAMP UPGRADES

This February, Danial Sprintz, Executive Director at Camp Massad, approached the Foundation in need of help. The camp was in the midst of applying for a government grant that required raising matching funds that they had not yet been able to secure through other avenues. This grant would provide important updates to the camp's existing security measures.

"We went around the community trying to find help reaching the minimum requirement; we were looking for help," Sprintz says. "But we were stuck, and that's when I spoke to Marla [Aronovitch] and John [Diamond] at the Foundation, and the next day they called back saying they were able to help."

With a March 31st deadline to raise the matching dollars needed to receive the Government of Canada's Securities Infrastructure Program Grant, JFM boosted Massad toward its goal with an initial grant covering roughly one-third of the required funds.

To build on that momentum, Sprintz continued to plan with the JFM on how best to find the remainder of the funds. Collectively, it was decided that the camp would embark on a focused campaign as a final effort.

Explaining the situation's urgency, Camp Massad put the message out to their community and alums for donations.

"We put that out on Friday, and we were done by Wednesday," Sprintz says. "The response from the community was extraordinary. We sat here in disbelief at how fast we reached the goal."

In the end, nearly 80 donations came in to help raise the remainder of the funds needed to earn the matching grant.

"We had people donating who hadn't donated in a decade, some who had never donated at all," he says. "The response from the community and the Foundation, jumping in so quickly, was heartwarming."

Jumpstarted by the grant from the JFM, community members were inspired to act, helping Camp Massad reach their goal with time to spare. The new security enhancements will cement Camp Massad as a safe haven for the community, reflecting the spirit of unity and support that prevailed during this endeavour.

In addition to the JFM's contribution, our donors with Donor Advised Funds were also able to contribute to Camp Massad's campaign. For more information on Donor Advised Funds, contact Laurel Hogan, Donor Development Associate, by email at lhogan@jewishfoundation.org, by telephone at 204.202.7438 or toll-free from the US/Canada at 1.855.284.1918.



30 YEARS OF EMPOWERMENT

THE WOMEN'S ENDOWMENT FUND CELEBRATES ITS 30TH ANNIVERSARY

We are thrilled to announce a significant milestone in our journey towards empowerment and philanthropy - the 30th anniversary of our Women's Endowment Fund (WEF).

Established in 1994 with a visionary purpose, the WEF has long supported women and girls across our province.

So many like-minded, generous supporters in the community aim to encourage and celebrate women's philanthropy by supporting WEF each year. Because of them, it has only continued to grow. WEF is a meaningful representation of "women helping women."

Since its inception, WEF has distributed close to \$1,000,000 in grants to more than 100 different organizations. These grants have served as catalysts for positive change, funding initiatives that uplift and empower women in various aspects of their lives.

The fund has played an instrumental role in supporting organizations dedicated to helping those who need it. Programs that have benefitted from WEF grants include:

- Improving healthcare access.
- Supporting low-income single mothers.
- Helping renovate residential homes for women with intellectual disabilities, and so much more.

The impact of the Women's Endowment Fund can genuinely be felt across our province.

As we commemorate this significant milestone, we want to thank all our supporters, donors, and partners who have been instrumental in making the Women's Endowment Fund successful. Your commitment to WEF has been the driving force behind its achievements for 30 years.

At the beginning of May, we will host a celebration at the Pavilion in Assiniboine Park to honour the founders, builders, and donors of this unique fund, and we will introduce the program to the next wave of donors.

Together, let us strive toward a future where every woman has the opportunity to thrive and succeed.

Thank you for being a part of this incredible journey.

To learn more about the Women's Endowment Fund and how you can support it, please contact Stephanie Casar, Director of Development & Gift Planning, by telephone at 204.202.7377 or toll-free from the US/Canada at 1.855.284.1918 or by email at scasar@jewishfoundation.org



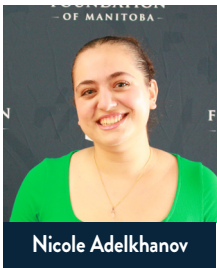
JEWISH
FOUNDATION
— OF MANITOBA —



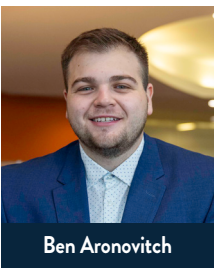
TWENTY-TWENTY-THREE
EDUCATIONAL AWARDS
& SCHOLARSHIPS

General Educational Awards

Awarded to Jewish students who are pursuing post-secondary education. Consideration is given to academics, community service, and/or financial need.



Nicole Adelkhanov



Ben Aronovitch



Maya Cantor



Lauren Cogan



Rachel Cogan



Kali Faingold



Uri Faingold



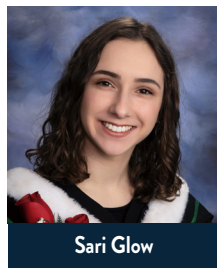
Yasmin Gelfman



Irina Gelzin



Martin Glikman



Sari Glow



Noa Goldberg



Thai Gorelick



Michael Gurvey



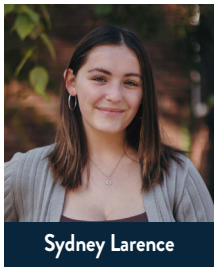
Emma Harris



Ariel Kasztan



Adi Keynan



Sydney Larence



Denise Levi



Jessica Levi



Adi Levitzky



Nathaniel Lisak



Anna Lokshin



Haniel Manov



Irit Margulets



Alina Markhasin



Evelin Melekh



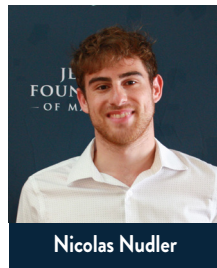
Alissa Miller



Rocio Mohadeb



Eden Mostovski



Nicolas Nudler



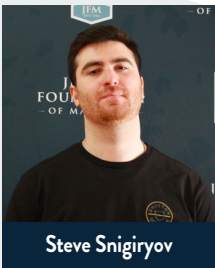
Maya Polevoi



Elián Polinger



Teddy Rubenstein



Steve Snigiryov



Lena Steinberg



Tobias Szkop



Ira Verkhlin



Hannah Waygarten



Kyle Yaffe

In 2023, the Jewish Foundation
of Manitoba was proud to award

\$179,675

to

59

EDUCATION AWARD AND
SCHOLARSHIP RECIPIENTS.



Ruth & Joe Freed and Stephen Freed and Family Academic Excellence Awards

Awarded to individuals who have demonstrated consistent academic excellence and a commitment to the Jewish community.

2023 recipients: Ryan Abells and Tim Rozovsky



Mark & Dorothy Danzker Scholarship

Awarded to an individual in a post-graduate degree program based on their academic achievements and contributions to their community.

2023 recipient: Yael Gelfman



Mona Gray Creative Arts Scholarship

Awarded to a Bachelor’s degree graduate or to a 3rd or 4th year undergraduate student who is pursuing a university degree in one of the following areas: creative writing, film, fine arts, music, theatre or dance.

2023 recipient: Mishelle Aminov Kosonovsky



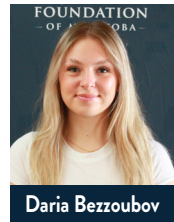
Saul & Claribel Simkin Centre Family Education Award

Awarded to the child of a long-serving Simkin Centre employee to assist with his or her post-secondary education.

2023 recipient: William Protasevych

George Finkle Memorial Scholastic Awards

Awarded to Jewish high school students who are beginning post-secondary education.



Daria Bezzoubov



Nomi Feuer



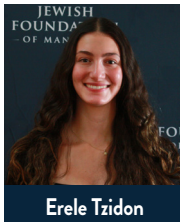
Emile Geladov



Nate Harris



Alexandra Kretskaya



Erele Tzidon

Judaic Studies and/or Studies in Israel

Awarded to individuals to encourage them in their pursuit of an education in Judaic studies or studies in Israel.



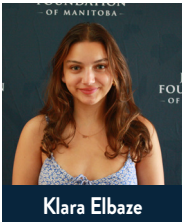
Nikol Broner



Harry Cohen



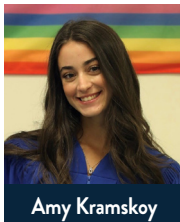
Nina Eilberg



Klara Elbaze



Noah Greenfield



Amy Kramskoy

Irma Penn in memory of Marvin Penn Educational Award

Awarded to students taking post-secondary Judaic Studies courses or teachers in the Jewish / Hebrew school system enrolled or entering a post-graduate program to further their professional development.



Ronit Amihude



Sofia Gotfrid



EDUCATIONAL AWARDS & SCHOLARSHIPS

Donors may establish scholarship funds to benefit students of a particular school, geographic region, educational discipline, gender, or other designation.

You may add to your scholarship fund at any time and so can others who share your interests in the community.

Advantages of establishing a scholarship fund

PERSONAL

Establish a scholarship fund in honour or in memory of a loved one, or name it to recognize your family, business, or a particular interest.

ENDURING

You can make a permanent impact on the lives of recipients, who in turn are likely to continue the tradition of helping others.

FLEXIBLE

Provide a scholarship now or plan a gift from your estate. The Jewish Foundation of Manitoba can accept donations of most assets including cash, securities, and life insurance policies*.

*Please contact the Foundation for more information.

Who should establish a scholarship fund?

A scholarship fund is ideal for individuals, families, businesses, and groups who:

- Value education •
- Want to give others an opportunity to pursue their dreams •
- Want to establish a legacy to honour or remember someone •

To establish a scholarship fund or for more information, please contact the Jewish Foundation of Manitoba.

For a complete list of all awards and guidelines, see our website at www.jewishfoundation.org.

The Jewish Foundation of Manitoba thanks the following funds that have made our academic awards possible:

Norman & Lesia Adelberg Scholarship
Cecilia Asper Fund
The Israel & Babs Asper Charitable Fund
Associated Retail Grocers (A.R.G.) of Winnipeg Fund
Helen & Bernard Atnikov Fund
Samuel & Mary Badner Memorial Scholarship Fund
Ziona Bellan Memorial Scholarship Fund
Cynthia Berney Fund
David & Esther Birn Family Fund
B'nay Abraham Sisterhood Scholarship Fund
Dee & Harold Buchwald Scholarship Fund
Molly & Charles Chapman Educational Fund
Phyllis & Saul Chochinov Memorial Fund
Sarah & Jack Cohen Fund
Meyer & Rita Cosman Fund
Marsha Cowan Scholarship
Jerry Dorfman Memorial Scholarship Fund
George Finkle Memorial Scholastic Award

Harry Fishman Scholarship Fund
Rivke Fleisher Memorial Scholarship Fund
Ruth and Joe Freed and Stephen Freed & Family Academic Excellence Awards
Rube & Sharon Ganetsky Educational Fund
Dr. Philip & Edah Goldstein Memorial Fund
In Memory of Chana Rivka Goldstein
In Memory of Joseph & Dvora Goldstein
Mona Gray Creative Arts Scholarship Fund
Susan & Sandor Guttman Scholarship Fund
Jewish Women’s Musical Club Fund
In Memory of Mico Kaftal
In Memory of Hope Kahane
Harvey & Sima Kay Scholarship Fund
Jim & Syble Klady Fund
Orah & Soody Kleiman Educational Fund
Deena Kravetsky Memorial Yeshiva Fund
In loving memory of my beloved husband, Dr. Paul P. Krolik, DDS
Michael Leipsic Jewish Student Athlete Scholarship Fund

Rita Gunn & Greg Mason Scholarship Fund
Lazar & Chana (Annie) Mozes Scholarship Fund
Sharon & Mel Myers Fund
Marym & Izzy Peltz Fund
Irma Penn Endowment Fund in memory of Marvin Penn
Sheila Perlmutter Education Fund
Harvey L. Pfeffer Scholarship Fund
Pilat-Riches Family
Sylvia & David Pollock Fund
Alfred & Rosalie Richman
Eli Ross Fund
Berte Sarner Rubin in memory of Benjamin & Sara Sarner University Fund
Judge Charles Rubin & Naida Rubin
Max & Jean Ruder Perpetual Scholarship Fund
Allan Sair Scholarship Fund
Ari Schaefer Bar Mitzvah Fund
Gabriel Schujman & Marcela Mangarelli
Chancellor Harvey L. Sectar Scholarship Fund

Miriam Atnikov Segal Scholarship Fund
Patty & Jack Sherman Memorial Fund
Minnie Shore Jewish Education Scholarship Fund
Annice Shreiber Fund
Saul & Claribel Simkin Centre Family Education Fund
Barry Snaper and Sharon Oberlander Family Fund
Ann Springman Memorial Fund
Rose & Moe Sucharov Jewish Education Fund
Clara & Morris Teplitsky, David Teplitsky and Bertha & Harry Schwartz Memorial Fund
Hana & Pinchas Vinchelstein Memorial Scholarship Fund
Joel Weinstein Memorial Scholarship
Winnipeg Jewish Orphanage Alumni Fund
Winnipeg Jewish Schools 2017 Reunion - Judaic Studies Scholarship Fund
Gary Wolfson Scholarship Fund
Zionist Educational Trust



For more information about the Jewish Foundation of Manitoba, please contact us at:

123 Doncaster Street | Suite C400 | Winnipeg, Manitoba R3N 2B2
Phone: 204.477.7520 | US/Canada Toll-Free: 1.855.284.1918

info@jewishfoundation.org
www.jewishfoundation.org



facebook.com/
jewishfoundationmb/