



JFM *focus*

THE POWER OF PHILANTHROPY

NISAN 5785 | SPRING 2025

RISING DEMAND FOR GRANTS

SURGING GRANT APPLICATIONS CALL FOR IMMEDIATE COMMUNITY IMPACT FUND GROWTH

For 61 years, Jewish Foundation of Manitoba donors have proven they have the foresight and the willingness to make a difference in the Jewish community through their continued support.

Today, we are seeing exponential increases in requests for Community Impact Grants from Manitoba's Jewish charities.

The problem? The increasing need has outpaced the growth of dollars available for the Foundation to support essential grant applications.

We are turning to our powerful donor base to address this shortfall. When you reflect upon your philanthropic goals for 2025, we hope you will consider one of the following actions;

- ***Establish a Community Impact Fund***
- ***Contribute to an existing Community Impact Fund***
- ***Direct distribution from your existing fund toward the Community Impact Fund granting pool***

The organizations synonymous with our Jewish community rely on Foundation grants to provide their services, and the amount needed to deliver their programs will continue to increase. Without the dollars to match, their future becomes unclear.

In 2014, 61 grant applications from Jewish community charities were reviewed, requesting \$850,000 from a pool of \$412,000. While the number of applications remained relatively stable in 2024 at 60, the total amount requested surged to \$1.9 million.

This is a 14% annual request increase, quickly outpacing Community Impact Fund growth.

In 2014, the Foundation housed 1,053 Community Impact Funds, totalling over

\$11 million. A decade later, this number had increased to 1,197 funds, reaching a combined value of \$20.2 million—an average annual growth of \$650,000—an annual increase of 6%, or under half of the 14% growth in grant requests.

To fully meet community needs and ensure we can fund as many requests as possible, we estimate that a growing endowment of \$23 million is needed. An endowment of this size will generate \$1.3 million in grants annually.

What's Driving the Need?

In recent years, many factors have caused costs to increase, forcing Jewish charities to operate with a hand tied behind their backs.

The government is tightening budgets and freezing granting opportunities, forcing them to lean more heavily on private funding.

Our Jewish community's infrastructure is aging. For example, the synagogues and Jewish Summer Camps we have attended for years are in need of costly maintenance. Combined with membership challenges, the costs of these essential upgrades become more daunting.

The war in Israel continues to bring new families to Manitoba, increasing the need for Jewish services to welcome and get them settled. With this heightened demand for social services, rising cost of living and global instability comes an ever-growing need for resources to care for our new community members.

Why Community Impact Funds?

Community Impact Grants have long been our most effective and flexible resource for supporting our organizations. The grant applications we receive cover a tremendous scope, and these funds allow our granting committee to directly address the needs of charities to deliver their programming.

In 2024, grants were approved to fund programs such as:

- ***A sensory room at Gray Academy for student support***
- ***Bursaries for students participating in March of the Living***
- ***Updated equipment and security features at numerous synagogues***
- ***Upgrades to the in-house kosher kitchen at Gwen Secter Creative Living Centre***
- ***Multi-year grants to the Jewish Federation of Winnipeg's PJ Library, a program utilized by so many families every day***

What can I do?

As you reflect on your philanthropic goals for 2025, we hope you will consider opening a Community Impact Fund or donating to an existing one. Starting a named fund requires an initial gift of just \$100 and is a terrific entry point to meaningful endowment building.

If you have an existing donor-advised fund on which you direct the distribution, you can allocate a portion of those dollars to the Community Impact Grants pool.

For those considering a bequest, designating it for Community Impact Funds is also a great option to ensure that your gift will adapt and evolve to help those who come after us.

Together, we can ensure our community flourishes and provides unmatched support to those in need.

To learn more or to let us know that you would like to help grow the Community Impact Fund, please contact the JFM office at 204.477.7520 or email info@jewishfoundation.org

SAFE SPACE FOR PATIENTS

NEW OUTDOOR GREENSPACE PROMOTES HEALING AND MENTAL HEALTH

Thanks to a Community Impact Grant from the Jewish Foundation of Manitoba, the Victoria Hospital Foundation has created a new therapeutic garden at ACCESS Fort Garry (AFG) that turns a previously unused space into a warm and welcoming environment for patients, staff, and the community.

The idea for the garden came from frontline workers who saw the need for an alternative therapeutic setting, noting that for many of their patients with mental health conditions, the clinical setting caused added stress and discomfort.

Stemming from one grief counsellor asking, "Wouldn't it be nice if we had a basketball hoop?" the idea evolved into a fully developed green space to support healing and wellness.

Phase one of the project was completed in November. It included planting bushes and greenery, creating a natural barrier between the Abinojii Mikanah expressway and the space, and installing the dreamed-of basketball hoop. Phase two is set to bring even more enhancements, such as a patio, shelter, tables, and a traditional Indigenous medicine garden.

"The goal is to create outdoor 'rooms' where therapists can meet with patients in a more relaxed setting," says Aimee Rice, Director of Development at Victoria Hospital Foundation.

The outdoor area is also available for community groups after hours, strengthening its role as a shared space for healing and connection. This garden enhances the patient experience, making therapy sessions more effective. It also serves as a place for supervised family visits in a natural setting for those utilizing Winnipeg Child and Family Services in the AFG building.

"We tremendously appreciate the support of the Jewish Foundation of Manitoba and its many donors," says Rice. "Their commitment to giving back is greatly improving mental health outcomes in our community."

With ongoing community involvement, the therapeutic garden will become vital to many healing journeys at ACCESS Fort Garry.

To learn how you can support the Community Impact Fund Grants, please contact the JFM office at 204.477.7520 or email info@jewishfoundation.org



HOW DID WE GET HERE?



-WOMEN'S-
ENDOWMENT FUND

THE WOMEN'S ENDOWMENT FUND CELEBRATES MULTIPLE GENERATIONS OF DONORS

In 2025, the mission of the Women's Endowment Fund (WEF) has never been more critical. Women's rights are being challenged worldwide in ways we could never have imagined, even a short time ago. The commitment to supporting, uplifting, and empowering women is at the top of our minds.

We recognize that true progress comes when we work together—across generations—to ensure equal rights and opportunities are available to everyone regardless of gender or race.

This year, we hope to further this message by hosting an evening to celebrate and support the Women's Endowment Fund on May 15th at Congregation Shaarey Zedek.

The evening will honour Marjorie Blankstein for her longstanding commitment to this fund as both a Founder and a Builder. Marjorie's daughter, Carol McArton, will speak about her family's connection to WEF and how it has resulted in four generations of engagement.

Attendees will learn about how the Women's Endowment Fund uplifts women in all aspects of life. From artistic endeavours to community building and women's health. You will hear real-life stories from grant recipients who see firsthand the effect of WEF grants and continue to ensure that justice, equality, and opportunity are available to all women and girls in Manitoba.

We see these values perpetuated as long-time WEF supporters have begun passing their passion for this cause on to their children and grandchildren. The next wave of WEF supporters is now grabbing hold of the torch.

Instilling a sense of social justice and tzedakah in younger generations is essential for maintaining the compassion and commitment to philanthropy so central to our community. The addition of a 4th generation of Women's Endowment Fund supporters is an inspiring testament to the preceding generations of women (and men) who paved the way for this endowment.

Your commitment to WEF is more than a donation—it is an investment in a future where women are empowered, supported, and valued. Since 2020, the yearly distribution from the Women's Endowment Fund has increased by \$25,000, with its largest distribution happening last year at just under \$101,000.

Thank you to all of the supporters of this great cause; your continued dedication is essential as this need continues to grow.

To learn more about the Women's Endowment Fund and how you can support it, please contact Stephanie Casar, Director of Development & Gift Planning, by telephone at 204.202.7377 or toll-free from the US/Canada at 1.855.284.1918 or by email at scasar@jewishfoundation.org

A SHINING STAR

THE LOSS OF A FRIEND CREATES A SCHOLARSHIP FOR THE "UNDERDOGS"

The JFM has always been more than just a workplace; as in many offices, your co-workers become like family. This past December, a cloud of heartbreak washed over our JFM family with the passing of one of its shining members, Jennifer Wood, after her year-long battle with cancer.

From the moment she came to us in 2008, Jenn's warmth, loyalty, and dedication became engrained in the Foundation, shaping our work and culture. Her presence is felt in every department, every process, every corner of our database, and in every person.

Foundation CFO Ian Barnes tells a story of "literally skipping" to the car with optimism after his first meeting with Jenn. It is a story that is a testament to her impact from day one and would foreshadow the influence she would have on the JFM's success and, in turn, our entire Jewish community.

Her loss leaves a void that can never truly be filled. Despite that, her influence remains and continues to resonate in everything the Foundation can achieve for years to come.

To honour her memory, the Foundation is collaborating with Jenn's family to establish a scholarship in her name. Spearheaded by

her husband, Larry, this scholarship will be a part of her lasting legacy. It will allow students who have obstacles in their path, financial or otherwise, to overcome them, further their education, and open doors to their future that may have otherwise been closed.

Jenn often reflected on the mentors who gave her the "kick in the pants" that helped shape her into the driven, successful person she was. Her family hopes this scholarship will do the same for a student who needs that extra push, just as she did.

"We hope that this scholarship will help someone who has goals, works hard regardless of their grades, and just needs some help to get there," says Jenn's husband, Larry. "Someone who might be seen as an underdog, who doesn't have the same advantages as their peers, that is who Jenn would look out for."

May her memory be a blessing.

If you would like to make a contribution the Jennifer L. Wood Memorial Scholarship, please contact Pam Minuk, Donor Services, at 204.477.7520, info@jewishfoundation.org, or Canada/U.S. toll-free 1.855.284.1918.



COMMUNITY IMPACT GRANTS



— COMMUNITY —
IMPACT FUNDS

Around Winnipeg

A JFM Community Impact Grant aided in the Royal Manitoba Theatre Centre's production of *Indecent* in the spring of 2025.

Indecent is a Tony Award-winning play within a play, with the characters performing Sholem Asch's *God of Vengeance*, and spans 50 years, detailing the rise and subsequent fall of the controversial play.

Written in 1906, *God of Vengeance* gained attention and acclaim across Europe in the early part of Asch's career, eventually leading to the debut of the play in the Yiddish theatre scene in New York. The play, which is set in a brothel run by a Jewish man and includes a same-sex kiss, was the first of its kind on an American stage and was deemed inappropriate and scandalous, leading to the entire ensemble being arrested on the grounds of obscenity.

Indecent, written by Paula Vogel, was first produced in 2015 and, by 2017, enjoyed a run on Broadway.

RMTC generously provided tickets to the Foundation for staff and volunteers to attend *Indecent* on February 27. The warm welcome included a pre-show reception for guests and was a terrific night of recognition for the theatre and our JFM family. The evening was an excellent opportunity for our committed and hardworking volunteers to see the impact of a Community Impact grant firsthand.

Thank you to RMTC for hosting the Foundation and for continuing to bring such powerful Jewish stories to our community.



JEWISH FOUNDATION
OF MANITOBA

STAFF ANNOUNCEMENT

We're excited to welcome Kris Widla to the JFM as our new Accounting Analyst. Originally from Krakow, Poland, Kris moved here nearly 40 years ago, shortly after finishing eighth grade.

Since coming to Canada, most of his time has been spent in Winnipeg. However, he also got to experience the Canadian north, spending three years living and working in Rankin Inlet, Nunavut.

Numbers have always been second nature to Kris, and though he initially considered following his father's footsteps into engineering, accounting ended up as his calling.

"As you can imagine, my strengths are with numbers," he jokes. "I've even placed as high as 40th in Manitoba in national math competitions."

Before joining the Foundation, Kris worked with non-profit organizations, most notably at Macdonald Youth Services. Giving back has always been important to him—he has volunteered with the Health Sciences Centre and the Pan Am Games and helped to support Ukrainian immigrants settling in Canada.

We're thrilled to have him on board and look forward to working with him!

TWENTY TWENTY-FOUR EDUCATIONAL AWARDS & SCHOLARSHIPS

General Educational Awards

Awarded to Jewish students who are pursuing post-secondary education.
Consideration is given to academics, community service, and/or financial need.

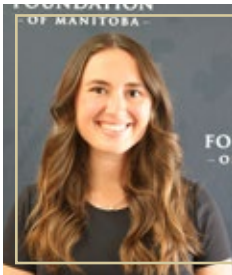


Not pictured: Jonathan Cantor and Naomi Skladnik



In 2024, the Jewish Foundation
of Manitoba was proud to award
\$176,931

to **54**
EDUCATION AWARD AND
SCHOLARSHIP RECIPIENTS.



**Ruth & Joe Freed and Stephen Freed and Family
Academic Excellence Awards**

Awarded to individuals who have demonstrated consistent academic excellence and a commitment to the Jewish community.

2024 recipients: Anya Aaron and Michael Baker



**EDUCATIONAL AWARDS
& SCHOLARSHIPS**

Donors may establish scholarship funds to benefit students of a particular school, geographic region, educational discipline, gender, or other designation.

You may add to your scholarship fund at any time and so can others who share your interests in the community.

Advantages of establishing a scholarship fund

PERSONAL

Establish a scholarship fund in honour or in memory of a loved one, or name it to recognize your family, business, or a particular interest.

ENDURING

You can make a permanent impact on the lives of recipients, who in turn are likely to continue the tradition of helping others.

FLEXIBLE

Provide a scholarship now or plan a gift from your estate. The Jewish Foundation of Manitoba can accept donations of most assets including cash, securities, and life insurance policies*.

*Please contact the Foundation for more information.

Who should establish a scholarship fund?

A scholarship fund is ideal for individuals, families, businesses, and groups who:

- Value education •
- Want to give others an opportunity to pursue their dreams •
- Want to establish a legacy to honour or remember someone •

To establish a scholarship fund or for more information, please contact the Jewish Foundation of Manitoba.

For a complete list of all awards and guidelines, see our website at www.jewishfoundation.org.



Mark & Dorothy Danzker Scholarship

Awarded to an individual in a post-graduate degree program based on their academic achievements and contributions to their community.

2024 recipient: Tim Rozovsky



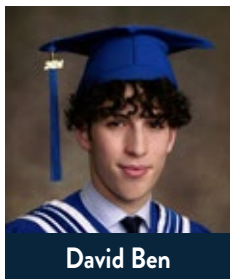
Saul & Claribel Simkin Centre Family Education Award

Awarded to the child of a long-serving Simkin Centre employee to assist with his or her post-secondary education.

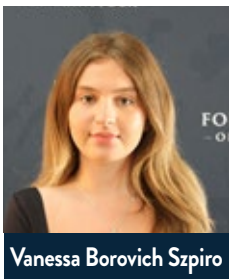
2024 recipient: Paolo Servando

George Finkle Memorial Scholastic Awards

Awarded to Jewish high school students who are beginning post-secondary education.



David Ben



Vanessa Borovich Szpiro

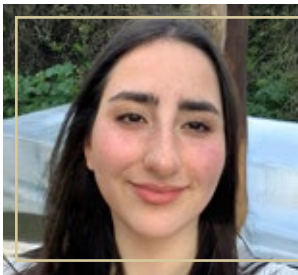


Yuval Shore



Idan Verkhlin

Not pictured: Ian Lempert



Judaic Studies and/or Studies in Israel

Awarded to individuals to encourage them in their pursuit of an education in Judaic studies or studies in Israel.

2024 recipient: Aziza Kosmin-Rose



Irma Penn in memory of Marvin Penn Educational Award

Awarded to students taking post-secondary Judaic Studies courses or teachers in the Jewish / Hebrew school system enrolled or entering a post-graduate program to further their professional development.

2024 recipient: Ronit Amihude

The Jewish Foundation of Manitoba thanks the following funds that have made our academic awards possible:

Norman & Lesia Adelberg Scholarship
Cecilia Asper Fund
The Israel & Babs Asper Charitable Fund
Associated Retail Grocers (A.R.G.) of Winnipeg Fund
Helen & Bernard Atnikov Fund
Samuel & Mary Badner Memorial Scholarship Fund
Ziona Bellan Memorial Scholarship Fund
Cynthia Berney Fund
David & Esther Birn Family Fund
B'nay Abraham Sisterhood Scholarship Fund
Dee & Harold Buchwald Scholarship Fund
Molly & Charles Chapman Educational Fund
Phyllis & Saul Chochinov Memorial Fund
Sarah & Jack Cohen Fund
Meyer & Rita Cosman Fund
Marsha Cowan Scholarship
Jerry Dorfman Memorial Scholarship Fund
George Finkle Memorial Scholastic Award
Harry Fishman Scholarship Fund

Rivke Fleisher Memorial Scholarship Fund
Ruth and Joe Freed and Stephen Freed & Family Academic Excellence Awards
Rube & Sharon Ganetsky Educational Fund
Dr. Philip & Edah Goldstein Memorial Fund
In Memory of Chana Rivka Goldstein
In Memory of Joseph & Dvora Goldstein
Mona Gray Creative Arts Scholarship Fund
Susan & Sandor Guttman Scholarship Fund
Jewish Women's Musical Club Fund
In Memory of Mico Kaftal
In Memory of Hope Kahane
Harvey & Sima Kay Scholarship Fund
Jim & Syble Klady Fund
Orah & Soody Kleiman Educational Fund
Deena Kravetsky Memorial Yeshiva Fund
In loving memory of my beloved husband, Dr. Paul P. Krolik, DDS
Michael Leipsic Jewish Student Athlete Scholarship Fund
Rita Gunn & Greg Mason Scholarship Fund

Faye Parks Micay Scholarship
Lazar & Chana (Annie) Mozes Scholarship Fund
Sharon & Mel Myers Fund
Marym & Izzy Peltz Fund
Irma Penn Endowment Fund in memory of Marvin Penn
Sheila Perlmutter Education Fund
Harvey L. Pfeffer Scholarship Fund
Sylvia & David Pollock Fund
Alfred & Rosalie Richman
Eli Ross Fund
Berte Sarner Rubin in memory of Benjamin & Sara Sarner
University Fund
Judge Charles Rubin & Naida Rubin
Max & Jean Ruder Perpetual Scholarship Fund
Allan Sair Scholarship Fund
Ari Schaefer Bar Mitzvah Fund
Gabriel Schujman & Marcela Mangarelli
Chancellor Harvey L. Selter Scholarship Fund
Miriam Atnikov Segal Scholarship Fund

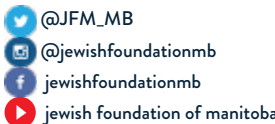
Serebnitski Family Fund
Patty & Jack Sherman Memorial Fund
Minnie Shore Jewish Education Scholarship Fund
Annice Shreiber Fund
Saul & Claribel Simkin Centre Family Education Fund
Barry Snaper and Sharon Oberlander Family Fund
Ann Springman Memorial Fund
Rose & Moe Sucharov Jewish Education Fund
Clara & Morris Teplitsky, David Teplitsky and Bertha & Harry Schwartz Memorial Fund
Hana & Pinchas Vinchelstein Memorial Scholarship Fund
Joel Weinstein Memorial Scholarship
Winnipeg Jewish Orphanage Alumni Fund
Winnipeg Jewish Schools 2017 Reunion - Judaic Studies Scholarship Fund
Gary Wolfson Scholarship Fund
Zionist Educational Trust



For more information about the Jewish Foundation of Manitoba, please contact us at:

123 Doncaster Street | Suite C400 | Winnipeg, Manitoba R3N 2B2
Phone: 204.477.7520 | US/Canada Toll-Free: 1.855.284.1918

info@jewishfoundation.org
www.jewishfoundation.org



NEW FUNDS

ESTABLISHED IN 2024

The Jewish Foundation of Manitoba would like to recognize all our new funds that were established in 2024. The Board of Directors thanks you for your commitment and generosity.

If you would like to open a fund please contact Pamela Minuk, Donor Services, by telephone at 204.477.7520 or toll-free from the U.S./Canada at 1.855.284.1918 or by email at pminuk@jewishfoundation.org.

ORGANIZATIONAL ENDOWMENT FUNDS

Anonymous (GRAYACAD)
Al Benarroch and Family (JCFS)
Maureen & George Bennett (BRIDGES)
Neil Charach Memorial Fund (GRAYACAD)
Chevra Mishnayes Synagogue Fund (CHEVRA)
Class of 2024 (GRAYACAD)
Tony Comper in support of Voices Into Action
 Choose Your Voice (CISA)
Marsha Cowan (LMTM)
Robert Gagwchuk, Brenlea Yamron and Family (JCFS)
Barbara & Adam Goszer Scholarship (GRAYACAD)
Murray Greenfield (CHESED)
Jo Ann Greisman Memorial Fund (CHESED)
Valerie Henderson (BRIDGES)
Josephine & Bill Hui (BRIDGES)
George & Judith Jones (BRIDGES)
Joanne & Sam Katz - Kay Four Properties (CHAI)
Joanne & Sam Katz - Kay Four Properties (CHESED)
Marshall S. Kneller Memorial Fund (CHEVRA)
Ahava Halpern & Frank Lavitt (HERITAGE)
Shea Lerner & Anna Tourtch (BBCAMP)
Marilyn & James MacGowan (BRIDGES)
Sharon & Ralph Melnicer (JCFS)
Noam Millo & Tamar Rubin Family (BBCAMP)
Potash Thau Family (HERITAGE)
In Memory of Ruth & Harry Rachlis (LMTM)
Reich and Reiner Memorial Fund (JCFS)
Meyer Rypp Memorial Fund (RADY)
The Sharp Foundation (CISA)
Shindleman Family (CISA)
Karen & Alan Shpeller and Family (JCFS)
Yamron Family (CHESED)

DESIGNATED & DONOR-ADVISED FUNDS

The Salomon & Mary Benarroch z”l Memorial Fund
Mel & Arlene Fages Mental Health and Wellbeing Fund
Marisa & David Hochman Family Fund
Gloria (nee Herman) Mendelson Fund
Ron Silver Gray Academy Award Fund
Justine Steinkopf Continuity Care Fund
Viducinski Memorial Fund

BAR/BAT MITZVAH FUNDS

Angus Samuel Bernstein Tzedakah Fund
Juniper Rosemary Bernstein Tzedakah Fund
Lyla Rose Katz Bat Mitzvah Fund
Kate Violet Lapointe Bat Mitzvah Fund
Simon Paterson Bar Mitzvah Fund
Laila Posner Bat Mitzvah Fund
Jack Schneider Bar Mitzvah Fund
Eli Joseph Koven Thomas Bar Mitzvah Fund

FIELD OF INTEREST FUNDS

Caroline Blankstein (WEF)
Miriam Brown (WEF)
Kylie Cameron (SPECNEEDS)
Carrie Fingold (WEF)
Bev Flackman (WEF)
Lori Gilfix (WEF)
Katie, Audrey and Hannah Hursh (WEF)
Daniela Jacobsohn (WEF)
Lindsey Leipsic (WEF)
Stephanie Miville McArton (WEF)
Isabel McArton (WEF)
Sharon & Ralph Melnicer (JUDAIC)
Sharon & Ralph Melnicer (SENIORS)
Sydney McArton O'Bray (WEF)
Brooke O'Bray (WEF)
Rowan O'Bray (WEF)
Daniel Putter (WEF)
David & Sharon Putter (WEF)
Danielle Rice (WEF)
Gabrielle Rice-Prout (WEF)
Ana Schujman (WEF)
Sandy Sheegl (WEF)
Laia Shpeller (WEF)
Shayna Shpeller (WEF)
Heather Welch (SPECNEEDS)
Jennifer L. Wood Memorial Scholarship (SCHOLARSHIP)
Fraydel Yamron (WEF)

COMMUNITY IMPACT FUNDS

Richard & Jackie Akman Family Fund
Boorman/Wiebe/Dyson/Dyck Family Legacy -
 75+ Years of JFM Service
Patricia Fay Literacy Fund
Isanne Goldberg & Josh Kerr Family Fund
Serky & Benny Goldberg Fund
H & S Perpetual Fund
Adam Herstein 'I Love You' Fund
Lorrie Kirshenbaum 'I Love You' Fund
Jack London 'I Love You' Fund
Howard Mandshein 'I Love You' Fund
Melissa Minuk Fund
Joe Nocita 'I Love You' Fund
Friends of Rosh Pina Cemetery
Betty Ann Searle Memorial Fund
Fayth & Yale Shaffer Fund
Bill & Michelle Silverberg Fund
Randie Silverstein 'I Love You' Fund
Richard S. Tapper Fund
Syd Thompson 'I Love You' Fund
Marla & Dale VanC Fund
Brenley Werner 'I Love You' Fund
Fraydel Yamron and Family

Your Generosity at Work

Women’s Endowment Fund Grants

In December 2024, the Board of Directors of the Jewish Foundation of Manitoba approved the following Women’s Endowment Fund grants. The Women’s Endowment Fund supports organizations and services that improve the lives of girls and women – of all backgrounds – in Manitoba.

Boys & Girls Clubs of Winnipeg - \$4,500

The project is an eight-week Girls Soccer program for youth ages 9-12 from at least 6 BGC Club locations. The program will empower older girls as Jr. Coaches, helping them develop into community and team leaders.

Marlene Street Community Resource Centre - \$4,600

The funds will be used for twice-monthly Grieving Support Circles.

To learn more about JFM grants and the application process, visit www.jewishfoundation.org or contact Marla Aronovitch, Director of Operations & Grants, at maronovitch@jewishfoundation.org or 204.477.7520.

Theatre Projects Manitoba - \$5,000

Theatre Projects Manitoba (TPM) will commission a female Indigenous artist to create a piece of visual art in response to the themes of their mainstage production in March 2025.

YWCA Westman - \$5,000

The Equinox Women's Health Symposium is a one-day workshop designed to provide information and empowerment to women.

Thanks to fundholders like you, the Jewish Foundation of Manitoba helps organizations deliver programs and services that make a difference in people’s lives.

Board of Directors

Officers/Executive
Dan Blankstein
CHAIR
Dafna Shore
VICE-CHAIR
Bruce Caplan
TREASURER
Uri Kraut
MEMBER AT LARGE

Directors

Lainey Bokhaut
Svetlana Chechelnitzky
Leah Craven
Laura Diamond
Dr. Sharon Goszer-Tritt
Dr. Daniel P. Levin
Chloë McComb
Russell Olivson
DeWayne Osborn
Dr. Alex Serebnitski
Paula Parks, Ex-Officio
Dr. Bonnie Cham, Past-Chair

Governors

Sheldon Berney
Marjorie Blankstein, C.M., O.M.
Yhetta M. Gold, C.M., O.M.
Hon. Richard H. Kroft, C.M.
Lillian Neaman
Gordan M. Pullan, K.C.
Harvey L. Secter, C.M., O.M.
Joseph J. Wilder, K.C.

Jewish Foundation of Manitoba USA, Inc.

Directors

Joel J. Dudeck
Jacqueline Simkin
Dan Blankstein
Dr. Bonnie Cham

Staff

John W. Diamond, B.A., LL.B.
CHIEF EXECUTIVE OFFICER
Ian Barnes, CPA, CGA
CHIEF FINANCIAL OFFICER
Marla Aronovitch
DIRECTOR OF OPERATIONS & GRANTS
Patti Boorman
DIRECTOR OF ADMINISTRATION
Stephanie Casar
DIRECTOR OF DEVELOPMENT & GIFT PLANNING
Laurel Hogan
DONOR DEVELOPMENT OFFICER
Josh Kerr
MARKETING & EVENTS ASSOCIATE
Pam Minuk
DONOR SERVICES
Nina Ostrozhko
FINANCIAL ADMINISTRATOR
Tracy Price
EXECUTIVE ASSISTANT
Drew Unger
DIRECTOR OF MARKETING & COMMUNICATIONS
Kris Widla
ACCOUNTING ANALYST

JFM Focus Newsletter

Drew Unger
EDITOR
Josh Kerr
WRITER

Jewish Foundation of Manitoba

Suite C400, 123 Doncaster Street
Winnipeg, Manitoba
R3N 2B2

Phone: 204.477.7520
U.S./Canada toll-free: 1.855.284.1918
info@jewishfoundation.org
www.jewishfoundation.org

[@JFM_MB](#)
[@jewishfoundationmb](#)
facebook.com/jewishfoundationmb/