



THE POWER OF PHILANTHROPY

IYAR 5786 | SPRING 2026



EVERY CHILD DESERVES CAMP

GROWING THE JEWISH COMMUNITY CAMPSHIP FUND TO PROVIDE FOR THE NEXT GENERATION OF CAMPERS

Summer camp is more than just a few weeks away from home. It is a place where children build confidence, form lifelong friendships, and develop a strong sense of identity. For many families, however, the cost of sending a child to camp is becoming increasingly difficult to manage.

Rising costs and growing demand are making financial support more essential than ever for families hoping to give their children a Jewish camp experience.

The Jewish Foundation of Manitoba's Jewish Community Campership Fund, established in 2011, now sits at over \$1 million in contributed capital. Each year, income from this fund helps support families who cannot afford the full cost of camp, ensuring that more children can take part in this formative experience.

At BB Camp, Executive Director Sarah Gould says the need for financial assistance remains significant. This past summer, approximately 20 percent of campers required support, with 66 campers receiving assistance and more than \$118,000 in funding requested.

"People don't ask unless they need it," Gould says. "Our goal is to get as many kids as possible to camp. No one is turned away because of cost."

A similar trend is being seen across the community. At Camp Massad, Executive Director Danial Sprintz has previously noted that the number of families requiring support has risen sharply in recent years, reflecting broader financial pressures facing households.

At the same time, demand for Jewish camp experiences continues to grow. Camps are seeing strong enrollment, with many programs filling quickly and waitlists becoming more common. Beyond recreation, camp provides something increasingly important for young people today: a place to feel connected, supported, and proud of their identity.

At Camp Massad, Sprintz describes camp as something far more than recreation. For many campers, particularly the growing number of newcomers and Russian-speaking Jewish families, camp is often their first real connection to Jewish community life. "It's sometimes the only touchpoint a kid has with Jewish culture and experience," Sprintz says. "At Massad, that means singing Hatikvah and O Canada at the flagpole, learning Hebrew through songs, and navigating daily life entirely in a language many campers don't yet speak. The playing field levels quickly. A kid from Transcona who's never said a Hebrew word and a new arrival from Israel who doesn't yet speak English find themselves, for the first time, genuinely equal."

They describe camp as a place where their children gain independence, build confidence, and develop a sense of belonging within the Jewish community, something not easily found elsewhere in their day-to-day lives.

"It gives them a space where they're surrounded by other Jewish kids. That connection is really important."

Experiences like these often extend far beyond a single summer. Camps consistently see that children who attend return year after year, later becoming staff and staying connected to their communities in meaningful and lasting ways.

For camps, families, and community leaders alike, the message is clear: campership support is not simply financial assistance, it is an investment in the future of the community.

"People don't ask unless they need it. Our goal is to get as many kids as possible to camp"

The need has grown sharply in recent years. Before COVID, roughly 25 percent of Massad campers required financial assistance. Today, that number sits closer to 70 percent, a shift Sprintz attributes to the pandemic, October 7th, and the wave of newcomer families those events brought into the community.

For one local parent, who asked to remain anonymous, camp has been transformative for their children, but only made possible through financial support.

"Without the subsidy, my kids wouldn't be able to go to Jewish camp," they shared. "It's just not something we could afford otherwise."

If you would like to help ensure that any child in our community who wants a Jewish camping experience will have one, please contact Laurel Hogan, Donor Development Officer, by email at lhogan@jewishfoundation.org, by telephone at 204.477.7462, or toll-free from the US/Canada at 1.855.284.1918.



—JEWISH COMMUNITY—
CAMPSHIP FUND

COLLECTIVE IMPACT

GENEROSITY AND STEWARDSHIP DRIVE YEAR OF MEANINGFUL GROWTH

2025 was a year of meaningful growth for the Jewish Foundation of Manitoba. Your generosity continues to strengthen the charitable organizations that define Jewish life across Manitoba. Thanks to the commitment of our donors, the Jewish Foundation of Manitoba's assets now exceed \$200 million.

The Foundation will maintain its distribution rate at 4.6% in 2026, the same rate as in 2025.

Thank you. This impact begins with you.

Market performance in excess of the Foundation's 2025 disbursements for grants and operations and contingencies for liabilities have also led to \$5.5 million in income being capitalized. These capitalizations will increase future granting by increasing the endowment base. Capitalization to an endowment fund, similar to a "dividend," is one of the ways the Foundation transforms today's financial strength into tomorrow's community support.

Simply put, capitalization helps secure additional resources for the organizations that care for our community.

Community organizations are better positioned to expand programs, enhance services, and respond to emerging needs. Capitalization provides stability. It enables planning. It strengthens impact.

Every gift plays a role in this progress. Every fund contributes to this future. Every grant reflects the mission and vision of our founders.

To further your impact, consider making a gift, adding to your existing fund, or establishing a new endowment. Contact the Jewish Foundation of Manitoba to learn how you can continue supporting the organizations that sustain our community — today and for generations to come.

To learn more, please contact the Foundation office at 204.477.7520 or email info@jewishfoundation.org



Welcome!

GABRIEL SHUSTER

A FOUNDATION STAFF SPOTLIGHT

Sometimes, our professional path can lead us back to the communities or places that first shaped our values.

This month, the Jewish Foundation of Manitoba welcomes Gabriel Shuster as the new Marketing & Events Associate. Having grown up attending Jewish programs and community events, Gabriel understands firsthand the impact that the foundation can have. After spending time working outside the community, he felt he needed to return and contribute more directly.

Gabriel is a graduate of Red River College Polytechnic's Business Administration program, where he majored in Marketing. He previously worked in events and marketing with Recycle Everywhere, engaging the public through educational initiatives and hands-on activations across Manitoba. In his new role, he supports the Foundation's communications efforts and assists with event logistics.

"Working in the nonprofit sector has shown me that my major motivation lies in seeing tangible, positive change," Gabriel shares. "There is no better place to pursue that than within the community that first instilled those values in me."

Outside of work, Gabriel is deeply engaged in community life. He is an avid film enthusiast who closely follows the awards circuit each year, a dedicated supporter of Chelsea and Barcelona, and a coffee fan who enjoys discovering local cafés and refining his own skills as an at-home barista. Gabriel's event planning skills are also being put to personal use. Recently engaged, he is currently organizing what may be the biggest event of his life.

The Jewish Foundation of Manitoba is delighted to welcome Gabriel to the team and looks forward to the contributions he will make to the community he calls home.

Endowment Book of Life
2026 Signers' Brunch

NOVEMBER 1, 2026

For more information or to become a signer, please contact Pamela Minuk, Donor Services
Ph: 204.477.7520 | Toll-Free: 1.855.284.1918 | pminuk@jewishfoundation.org

Each year we celebrate our Legacy Donors through the Endowment Book of Life. Gifts from EBOL Signers continue to allow Manitoba charities to thrive today while planning for tomorrow. If you have left a gift to the Jewish Foundation of Manitoba in your will, or if you would like to learn more about making a legacy gift, please get in touch with us.

When you leave a gift to the Jewish Foundation of Manitoba, it is our privilege to inscribe your story in the Endowment Book of Life. Your commitment will have an impact for years to come.

BAR/BAT MITZVAH FUNDS

Recognizing that the next generation is the future, the Foundation introduced Bar/Bat Mitzvah endowment funds—an opportunity for young people to gain experience with endowment giving, and to begin planting for the future.

Bar/Bat Mitzvah endowment funds teach young people about the importance of tzedakah and provide them with the opportunity to effect positive change in their community.

Participants gain an understanding of community needs, earn the satisfaction of contributing to the community, and start on a life-long path of meaningful giving.



Interested in starting a Bar/Bat Mitzvah Fund on behalf of a child in your family?
Contact Donor Services at 204.477.7520

PRESERVING A LIFETIME

THE MEMORY OF SAMUEL WILDER TURNS A PROFESSIONAL LEGACY INTO FUTURE OPPORTUNITY

For Wendy Wilder, creating a scholarship was not about recognition or immediate results. It was about something more lasting. It was about preserving a legacy and a lifetime of contributions to both the community and the profession.

Following the passing of her husband, Sam Wilder, just over two years ago, Wendy decided to establish a scholarship in his memory. Sam had built a distinguished legal career spanning nearly 6 decades, focusing on litigation. Beyond his professional accomplishments, he was deeply involved in Winnipeg's civic and Jewish communities, leaving an impact on both.

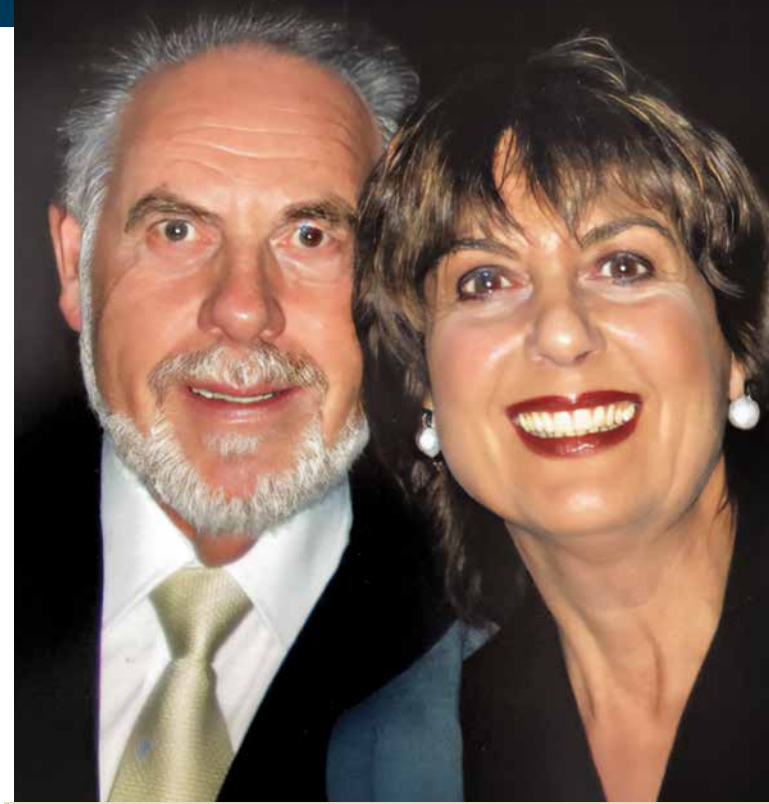
"This keeps his name alive," Wendy explains.

The Litigation Prize in Memory of Samuel Isaac Wilder, K.C. reflects that legacy with intention. It is designed to support a second-year law student pursuing litigation, directly connecting Sam's life's work to the next generation entering the field. While the fund is still new, its purpose is clear. It ensures that Sam's influence continues not only in memory but also in opportunity.

Establishing a fund like this takes time and commitment. Wendy began the process through the Foundation, working to ensure it would be properly structured and sustained. All endowment funds are designed to provide lasting support and to make a continuing impact. In this way, a personal tribute becomes a lasting source of impact that continues year after year.

Wendy's decision offers a model for others. Creating a fund does not require a large-scale initiative. It begins with a simple intention, whether to honour a loved one, support a cause, or give back to a community that has given so much. With the right structure in place, that intention can grow into something that continues to support and strengthen a community for years to come.

Establishing an endowment fund is a tangible way to create that lasting impact. Funds can begin with contributions as low as \$100, growing over time until they reach the level where donors can recommend how the fund supports the causes they care about most. In Wendy's case, that meant creating a scholarship that reflects Sam's legacy in litigation.



To contribute to the Wilder Scholarship Fund, or to explore how you can establish a fund of your own, please contact the Jewish Foundation of Manitoba at 204.477.7520. Your gift today can become an enduring source of opportunity for generations to come.

PLANT SOMETHING FOR HER

THIS SPRING, CONSIDER GIVING TO SUPPORT LASTING CHANGE FOR WOMEN AND GIRLS ACROSS MANITOBA

The Women's Endowment Fund supports a wide range of programs that benefit women and girls across Manitoba. With more than 800 fundholders and a fund valued at \$2.46 million, it generates close to \$105,000 annually to distribute through grants.

These grants support initiatives such as health research through CancerCare Manitoba and St. Boniface Hospital, essential community services like Siloam Mission's clothing program, and programs that provide swimming and water safety training. The reach is broad, but the purpose is consistent: responding to real needs in communities across the province for all women.

The need for support continues to grow. Organizations are facing increasing demand for services as they work to address health challenges, safety, housing insecurity, and access to opportunity. At the same time, costs are rising and pressure on community programs is increasing.

To meet this reality, the Women's Endowment Fund must continue to grow beyond its current \$2.46 million, with a goal of reaching \$3.0 million to increase its annual granting capacity. Without additional contributions, it becomes more difficult to keep pace with the scale and urgency of rising need being seen across Manitoba.

Continued growth is essential to ensure the fund can remain responsive. This support also helps ensure stability for organizations planning long-term programs and responding to emerging community needs. As demand grows, flexible and reliable funding becomes increasingly important so that services are not only maintained but strengthened over time.

This spring is the time to contribute. Every donation, whether from a new fundholder or an existing supporter, strengthens the fund's ability to respond to these growing needs.

Endowment giving is designed to create ongoing support, meaning each contribution continues to generate impact year after year. By giving today, you help ensure the fund can expand its reach and sustain support for women across Manitoba.



— WOMEN'S —
ENDOWMENT FUND

This spring, please help us grow this essential support for so many women and girls in Manitoba. Contact the Jewish Foundation of Manitoba at 204.477.7520 today!



**JEWISH
FOUNDATION**
— OF MANITOBA —

TWENTY TWENTY-FIVE EDUCATIONAL AWARDS & SCHOLARSHIPS

General Educational Awards

Awarded to Jewish students who are pursuing post-secondary education. Consideration is given to academics, community service, and/or financial need.



In 2025, the Jewish Foundation
of Manitoba was proud to award

\$230,759

to

72

EDUCATION AWARD AND
SCHOLARSHIP RECIPIENTS.

Mark & Dorothy Danzker Scholarship

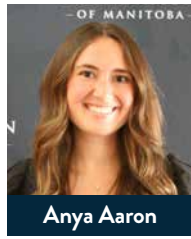
Awarded to an individual in a post-graduate degree program based on their academic achievement and community contributions..



Maya Polevoi

Ruth & Joe Freed and Stephen Freed and Family Academic Excellence Awards

Awarded to individuals who have demonstrated consistent academic excellence and a commitment to the Jewish community.



Anya Aaron



Michael London



Yael Gelfman

Mona Gray Creative Arts Scholarship

Awarded to a student who is pursuing a university/college degree in one of the following areas: creative writing, film, fine arts, music, theatre, dance, interior design, graphic arts, communication design, game development art, digital media design or digital film and media production.



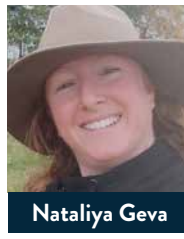
Daniel Keding

Irma Penn in memory of Marvin Penn Educational Award

Awarded to students taking post-secondary Judaic Studies courses or teachers in the Jewish / Hebrew school system enrolled or entering a post-graduate program to further their professional development.



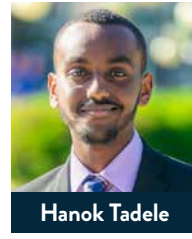
Heather Micflikier



Nataliya Geva

Saul & Claribel Simkin Centre Family Education Award

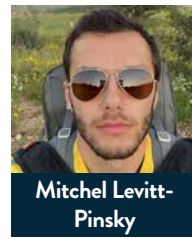
Awarded to the child of a long-serving Simkin Centre employee to assist with his or her post-secondary education.



Hanok Tadele

Joel A. Weinstein Memorial Scholarship

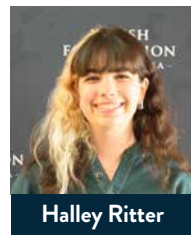
Awarded to a full-time student who is attending a university, college or post-graduate program at an educational institution in Israel who has a strong commitment to the community and volunteerism.



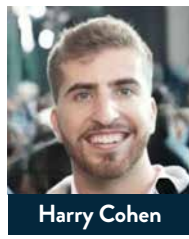
Mitchel Levitt-Pinsky

Judaic Studies and/or Studies in Israel

Awarded to individuals to encourage them in their pursuit of an education in Judaic studies or studies in Israel.



Halley Ritter



Harry Cohen



Michel Diamante

George Finkle Memorial Scholastic Awards

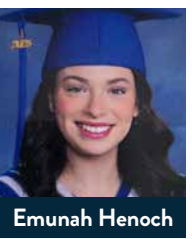
Awarded to Jewish high school students who are beginning post-secondary education.



Carli Bravo



Elin Riman



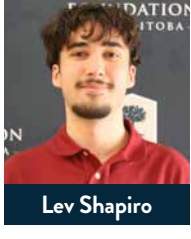
Emunah Henoch



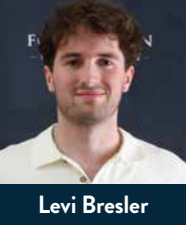
Hannah Schaeffer



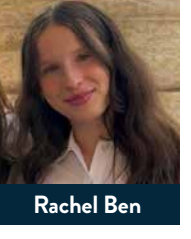
Jonathan Ben



Lev Shapiro



Levi Bresler



Rachel Ben



EDUCATIONAL AWARDS & SCHOLARSHIPS

Donors may establish scholarship funds to benefit students of a particular school, geographic region, educational discipline, gender, or other designation.

You may add to your scholarship fund at any time and so can others who share your interests in the community.

Advantages of establishing a scholarship fund

PERSONAL

Establish a scholarship fund in honour or in memory of a loved one, or name it to recognize your family, business, or a particular interest.

ENDURING

You can make a permanent impact on the lives of recipients, who in turn are likely to continue the tradition of helping others.

FLEXIBLE

Provide a scholarship now or plan a gift from your estate. The Jewish Foundation of Manitoba can accept donations of most assets including cash, securities, and life insurance policies*.

*Please contact the Foundation for more information.

Who should establish a scholarship fund?

A scholarship fund is ideal for individuals, families, businesses, and groups who:

- Value education
- Want to give others an opportunity to pursue their dreams
- Want to establish a legacy to honour or remember someone

To establish a scholarship fund or for more information, please contact the Jewish Foundation of Manitoba.

For a complete list of all awards and guidelines, see our website at www.jewishfoundation.org.

The Jewish Foundation of Manitoba thanks the following funds that have made our academic awards possible:

Norman & Lesia Adelberg Scholarship
Cecilia Asper Fund
The Israel & Babs Asper Charitable Fund
Associated Retail Grocers (A.R.G.) of Winnipeg Fund
Helen & Bernard Atnikov Fund
Samuel & Mary Badner Memorial Scholarship Fund
Ziona Bellan Memorial Scholarship Fund
David & Esther Birn Family Fund
B'nay Abraham Sisterhood Scholarship Fund
Dee & Harold Buchwald Scholarship Fund
Molly & Charles Chapman Educational Fund
Phyllis & Saul Chochinov Memorial Fund
Sarah & Jack Cohen Fund
Meyer & Rita Cosman Fund
Marsha Cowan Scholarship
Jerry Dorfman Memorial Scholarship Fund
Claire & David Dveris Fund
George Finkle Memorial Scholastic Award
Harry Fishman Scholarship Fund

Rivke Fleisher Memorial Scholarship Fund
Ruth and Joe Freed and Stephen Freed & Family Academic Excellence Awards
Rube & Sharon Ganetsky Educational Fund
General Donations
Dr. Philip & Edah Goldstein Memorial Fund
In Memory of Chana Rivka Goldstein
In Memory of Joseph & Dvora Goldstein
Mona Gray Creative Arts Scholarship Fund
Susan & Sandor Guttman Scholarship Fund
Jewish Women's Musical Club Fund
In Memory of Mico Kaftal
In Memory of Hope Kahane
Harvey & Sima Kay Scholarship Fund
Jim & Syble Klady Fund
Orah & Soody Kleiman Educational Fund
Deena Kravetsky Memorial Yeshiva Fund
In loving memory of my beloved husband, Dr. Paul P. Krolik, DDS
Michael Leipsic Jewish Student Athlete Scholarship Fund

Rita Gunn & Greg Mason Scholarship Fund
Faye Parks Micay Scholarship
Lazar & Chana (Annie) Mozes Scholarship Fund
Sharon & Mel Myers Fund
Marym & Izzy Peltz Fund
Irma Penn Endowment Fund in memory of Marvin Penn
Sheila Perlmutter Education Fund
Harvey L. Pfeffer Scholarship Fund
Sylvia & David Pollock Fund
Alfred & Rosalie Richman
Eli Ross Fund
Berte Sarner Rubin in memory of Benjamin & Sara Sarner University Fund
Judge Charles Rubin & Naida Rubin Fund
Max & Jean Ruder Perpetual Scholarship Fund
Allan Sair Scholarship Fund
Ari Schaefer Bar Mitzvah Fund
Scholarship & Educational Awards Endowment Fund
Gabriel Schujman & Marcela Mangarelli

Cancellor Harvey L. Selter Scholarship Fund
Miriam Atnikov Segal Scholarship Fund
Patty & Jack Sherman Memorial Fund
Minnie Shore Jewish Education Scholarship Fund
Annice Shreiber Fund
Saul & Claribel Simkin Centre Family Education Fund
Barry Snaper and Sharon Oberlander Family Fund
Ann Springman Memorial Fund
Rose & Moe Sucharov Jewish Education Fund
Clara & Morris Teplitsky, David Teplitsky and Bertha & Harry Schwartz Memorial Fund
Hana & Pinchas Vinchelstein Memorial Scholarship Fund
Joel Weinstein Memorial Scholarship
Winnipeg Jewish Orphanage Alumni Fund
Winnipeg Jewish Schools 2017 Reunion - Judaic Studies Scholarship Fund
Gary Wolfson Scholarship Fund
Zionist Educational Trust

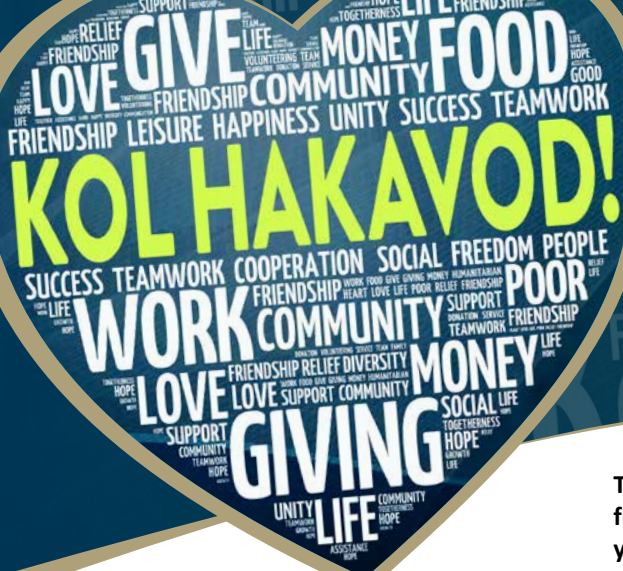


For more information about the Jewish Foundation of Manitoba, please contact us at:

123 Doncaster Street | Suite C400 | Winnipeg, Manitoba R3N 2B2
Phone: 204.477.7520 | US/Canada Toll-Free: 1.855.284.1918

info@jewishfoundation.org
www.jewishfoundation.org





NEW FUNDS

ESTABLISHED IN 2025

The Jewish Foundation of Manitoba would like to recognize all our new funds that were established in 2025. The Board of Directors thanks you for your commitment and generosity.

ORGANIZATIONAL ENDOWMENT FUNDS

Anonymous (BBCAMP)
 Sharon Allentuck (NCJW-WINNIPEG)
 Toni & Abe Berenhaut (HOLOCAUST)
 Honoring our parents Harold & Annette Black and sister Maxann Fund (LMTM)
 Joshua & Gaby Bokhaut (CAMBERSHIP)
 Jonah & Danielle Brown Family (BBCAMP)
 Jared Cantor & Mia Jacobs Family (BBCAMP)
 Celebrating 100 Years (1925-2025) (NCJW-WINNIPEG)
 Sidney Chapnick (LMTM)
 Natasha Brown & Ethan Chochinov (BBCAMP)
 Class of 2025 (GRAYACAD)
 Jessica & Joel Cogan (LMTM)
 Jesse Garber & Jishelle Chakkalackal Family (BBCAMP)
 Barbara Gleiberman and Family (BIRTHRIGHT)
 Glinger Family (LMTM)
 Dina Granove Memorial Fund (ETZCHAYIM)
 Rhonda Matias Memorial Fund (BBCAMP)
 Sharon & Ralph Melnicer (HOLOCAUST)
 Bert Minuk in memory of Randy Minuk (RADY)
 Shirley Nezon Memorial Fund (SIMKIN)
 Nancy & Hart Pollack in memory of Sharon Pollack (LMTM)
 Laura Jaeger-Pollock & Joey Pollock Family (BBCAMP)
 Clarice & Leonard Rayter (LMTM)
 Rich Slonim Family Fund (LMTM)
 Corky & Stephen Rosenfield (LMTM)
 In Memory of Sidney & Rita Shreiber (LMTM)
 Alex Sommer Memorial Fund (CHAI)
 Liat Stitz & Drew McGillawee Campership Fund (CMASSAD)
 Allison & Jonathan Strauss and Family (GRAYACAD)
 Fern Swedlove (LMTM)
 Ronit Zalik Family (BBCAMP)
 Foster Lyle (GROW)

DESIGNATED & DONOR-ADVISED FUNDS

Dr. Leonard & Hope Kahane Fund
 Molly & Saul Shaffer Award for Excellence in Medicine Fund
 Allison & Jonathan Strauss and Family Fund
 Barry Wolk Award for Excellence in Math Fund

BAR/BAT MITZVAH FUNDS

Ruth Gili Bernstein Tzedaka Fund
 Allie Willow Brawerman Bat Mitzvah Fund
 Samuel Hayes Cosman-Sturrey Fund

FIELD OF INTEREST FUNDS

Caroline Blankstein (WEF)
 Sarah Leena Bradley (WEF)
 Sarah Goszer (WEF)
 Taylor Jess Kilburn (WEF)
 Ian Harry McArton (WEF)
 Teddy Morley McArton (WEF)
 Susan Michelle Elaine Moscovitch (WEF)
 Graham Scott O'Bray (WEF)

COMMUNITY IMPACT FUNDS

Dr. Harold Diamond 90th Birthday Fund
 Rachel Fainstein Fund
 Sarah Friedman Special Birthday Fund
 Brenda Gibson 'I Love You' Fund
 Nancy Margolis & Shael Glesby Fund
 Marilyn Goldberg 'I Love You' Fund
 Betty Joan Katz & Melvyn Lionel Katz Fund
 Paul Night 'I Love You' Fund
 Edith & David Landy Endowment Fund
 Morley & Judy Reider Memorial Fund
 Stephen Rosenfield 'I Love You' Fund
 Eric Rosenhek Fund

If you would like to open a fund please contact Pamela Minuk, Donor Services, by telephone at 204.477.7520 or toll-free from the U.S./Canada at 1.855.284.1918 or by email at pminuk@jewishfoundation.org.

Your Generosity at Work

Women's Endowment Fund Grants

In December 2025, the Board of Directors of the Jewish Foundation of Manitoba approved the following Women's Endowment Fund grants. The Women's Endowment Fund supports organizations and services that improve the lives of girls and women – of all backgrounds – in Manitoba.

Adas Yeshurun Herzlia Congregation - \$2,000

Support provided to establish a Family Room, creating a dedicated space for nursing mothers and a sensory-friendly environment for children with disabilities.

CancerCare Manitoba - \$40,000

Support provided for Cervical Cancer in Manitoba: Are We Moving Towards Elimination?, researching incidence, mortality, and survival trends to better understand women's health outcomes.

Jewish Child and Family Service - \$14,000

Support provided for Voices from A New Home, supporting publication of a book and a theatrical launch event highlighting newcomer experiences.

Royal Aviation Museum of Western Canada - \$30,000

Support provided for Pioneers with Wings, an initiative highlighting women's contributions to aviation through exhibitions and career programming.

Siloam Mission - \$5,000

Support provided for Dignity in Threads, supplying free clothing and essential apparel through Siloam Mission's clothing room to support vulnerable women.

St. Boniface Hospital Foundation - \$24,324

Support provided for Women's Heart Health Equipment, purchasing a Real-Time PCR System to support advanced cardiovascular research led by Dr. Rabinovich-Nikitin.

Swim With Me! Foundation - \$10,000

Support provided for Swim Smart Tuesdays, an 8-week swimming and water safety program for girls from Indigenous and newcomer communities.

To learn more about JFM grants and the application process, visit www.jewishfoundation.org or contact Marla Aronovitch, Director of Operations & Grants, at maronovitch@jewishfoundation.org or 204.477.7520.

Board of Directors

Officers/Executive
 Dan Blankstein
 CHAIR
 Dafna Shore
 VICE-CHAIR, CHAIR-ELECT
 Bruce Caplan
 TREASURER
 Russell Olivson
 MEMBER-AT-LARGE
 Dr. Bonnie Cham
 PAST-CHAIR

Directors

Svetlana Chechelnitzky
 Leah Craven
 Laura Diamond
 Dr. Sharon Goszer-Tritt
 Dr. Daniel P. Levin
 DeWayne Osborn
 Stephen Rosenfield
 Dr. Alex Serebnitski
 Carrie Shenkarow, Ex-Officio

Governors

Sheldon Berney
 Marjorie Blankstein, C.M., O.M.
 Hon. Richard H. Kroft, C.M.
 Lillian Neaman
 Gordan M. Pullan, K.C.
 Harvey L. Secter, C.M., O.M.
 Joseph J. Wilder, K.C.

Jewish Foundation of Manitoba USA, Inc.

Directors

Joel J. Dudeck
 Jacqueline Simkin
 Dan Blankstein
 Dr. Bonnie Cham

Staff

John W. Diamond, B.A., LL.B.
 CHIEF EXECUTIVE OFFICER
 Ian Barnes, CPA, CGA
 CHIEF FINANCIAL OFFICER
 Marla Aronovitch
 DIRECTOR OF OPERATIONS & GRANTS
 Patti Boorman
 DIRECTOR OF ADMINISTRATION
 Stephanie Casar
 DIRECTOR OF DEVELOPMENT & GIFT PLANNING
 Laurel Hogan
 DONOR DEVELOPMENT OFFICER
 Lynda Joyal
 DEPUTY CHIEF FINANCIAL OFFICER
 Pam Minuk
 DONOR SERVICES
 Tracy Price
 EXECUTIVE ASSISTANT
 Gabriel Shuster
 MARKETING & EVENTS ASSOCIATE
 Drew Unger
 DIRECTOR OF MARKETING & COMMUNICATIONS

JFM Focus Newsletter

Drew Unger
 EDITOR
 Gabriel Shuster
 WRITER

Jewish Foundation of Manitoba

Suite C400, 123 Doncaster Street
 Winnipeg, Manitoba
 R3N 2B2

Phone: 204.477.7520
 U.S./Canada toll-free: 1.855.284.1918
info@jewishfoundation.org
www.jewishfoundation.org

[@JFM_MB](https://www.instagram.com/@JFM_MB)
[@jewishfoundationmb](https://www.facebook.com/jewishfoundationmb/)
[facebook.com/jewishfoundationmb/](https://www.facebook.com/jewishfoundationmb/)